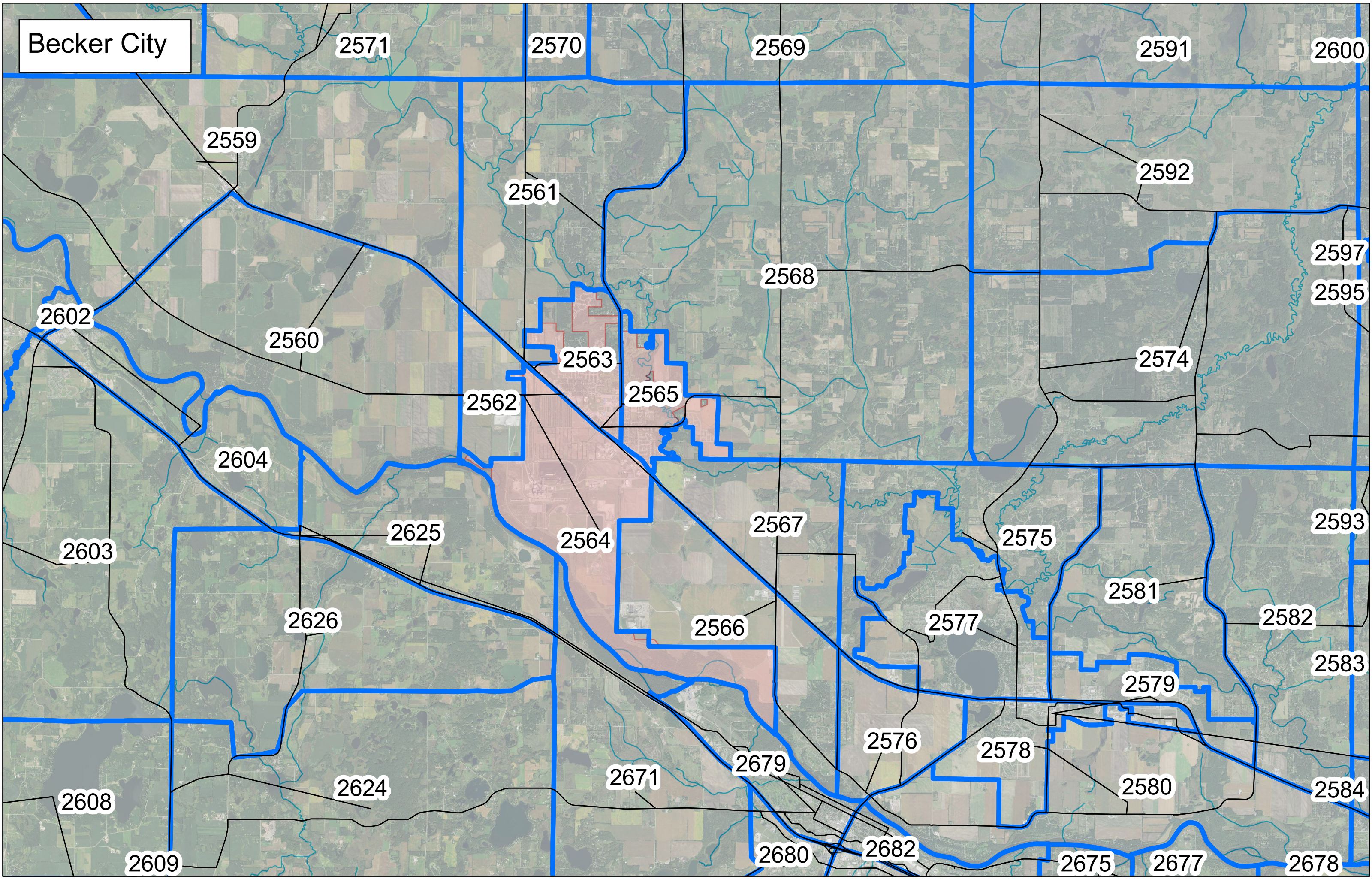


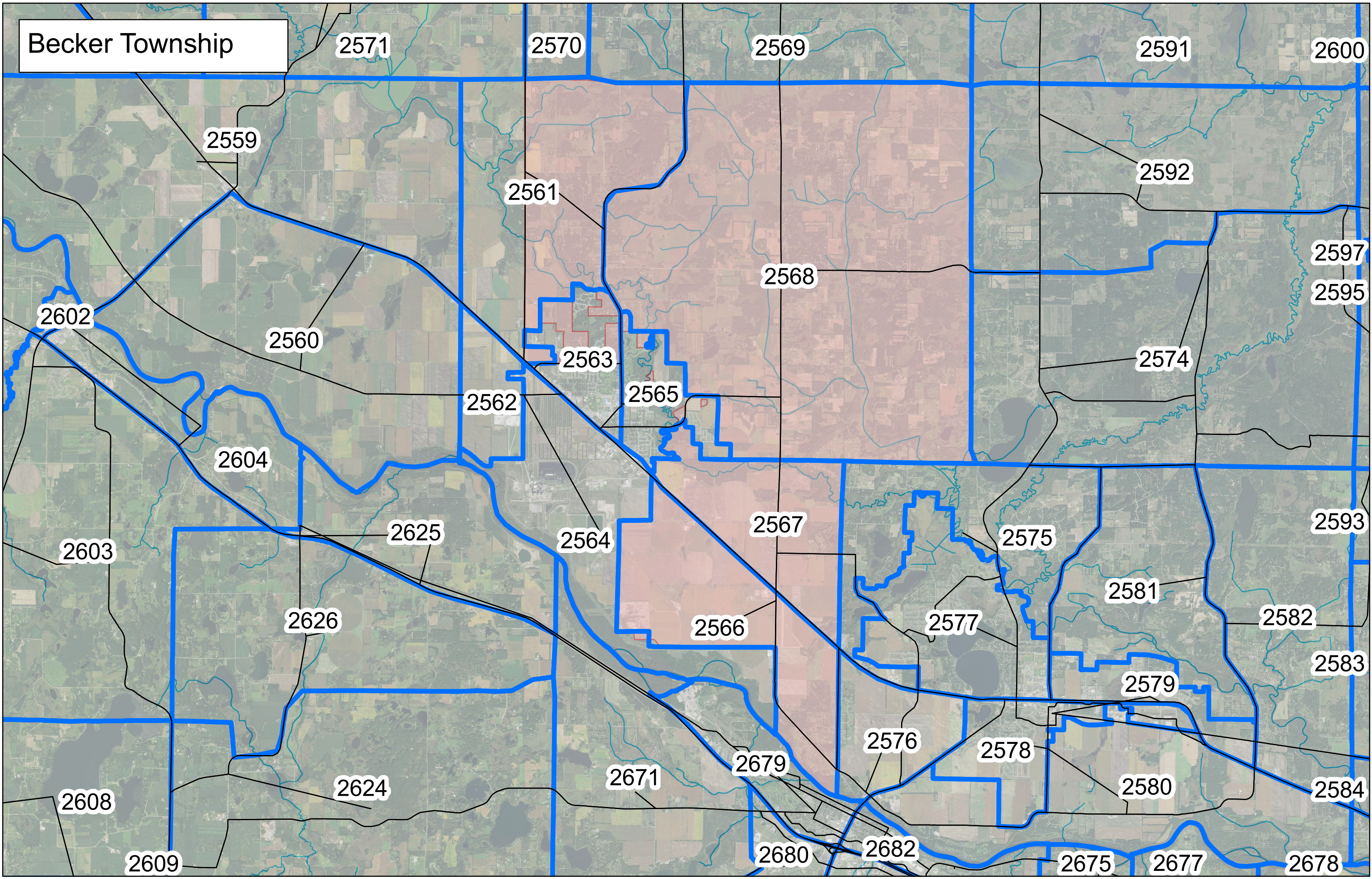
Becker City



Becker City

TAZ	Year 2010			Year 2014			Year 2040		
	Population	Household	Employment	Population	Household	Employment	Population	Household	Employment
2563	2,825	950	882	2,931	982	753	4,070	1,450	1,560
2564	8	2	971	24	6	1,085	190	70	1,100
2565	1,898	633	88	1,951	648	161	2,360	880	260
TOTAL	4,731	1,585	1,941	4,906	1,636	1,999	6,620	2,400	2,920

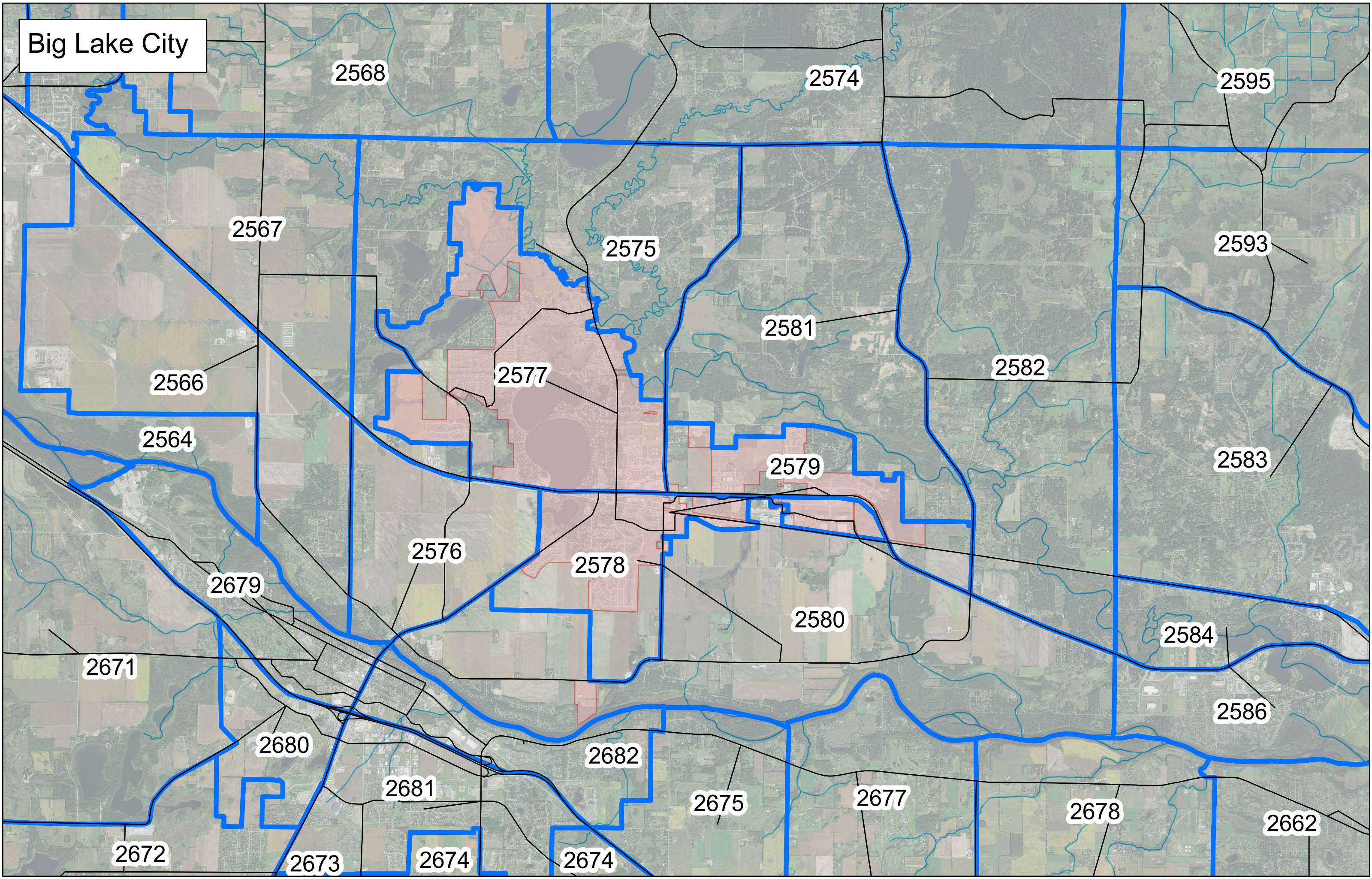
Becker Township



Becker Township

TAZ	Year 2010			Year 2014			Year 2040		
	Population	Household	Employment	Population	Household	Employment	Population	Household	Employment
2561	1,019	294	23	1,088	313	18	1,530	550	350
2566	738	211	93	789	225	80	1,010	370	400
2567	334	115	18	352	121	33	640	230	440
2568	2,554	815	68	2,723	867	141	3,640	1,330	700
TOTAL	4,645	1,435	202	4,952	1,526	272	6,820	2,480	1,890

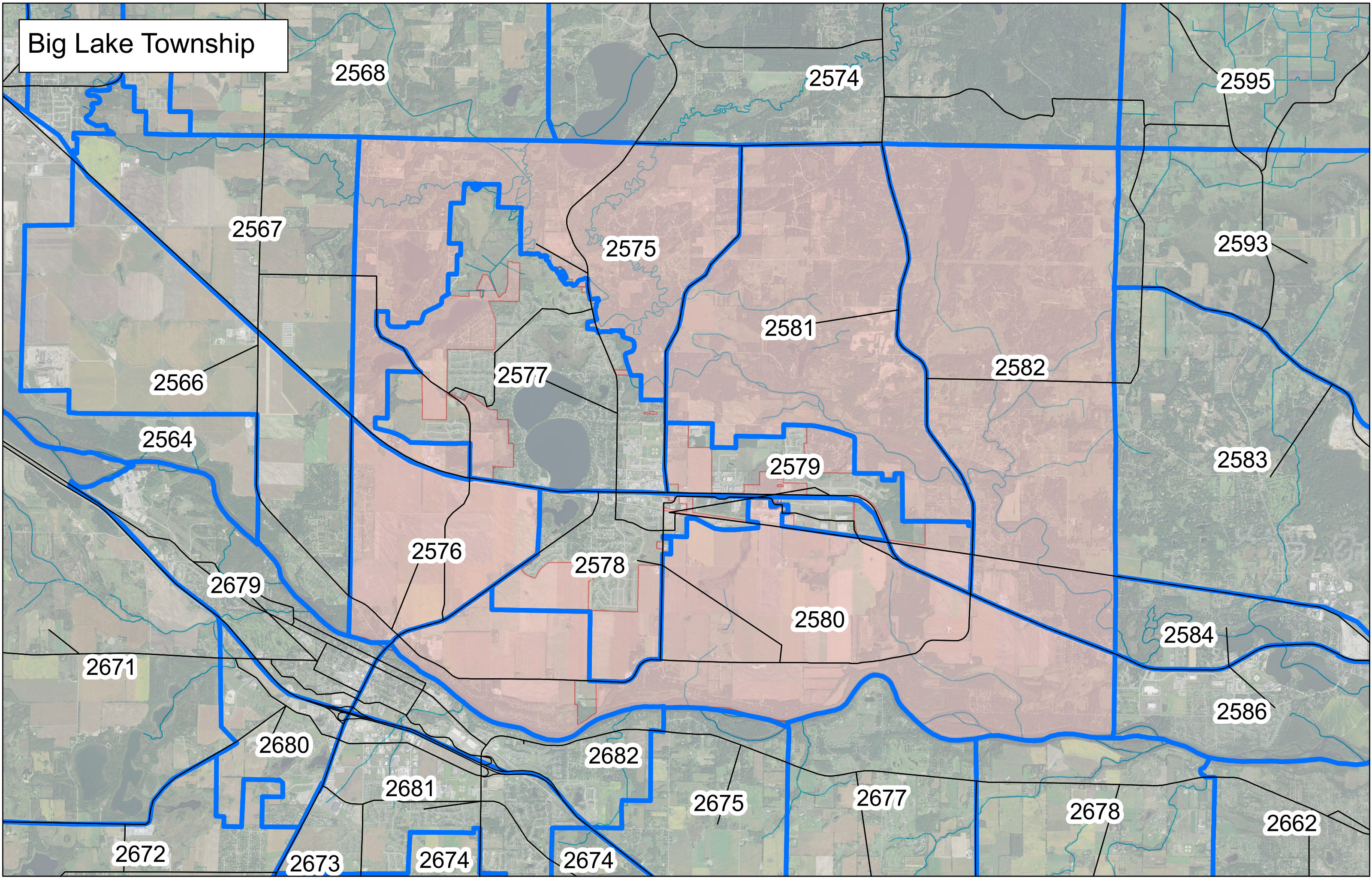
Big Lake City



Big Lake City

TAZ	Year 2010			Year 2014			Year 2040		
	Population	Household	Employment	Population	Household	Employment	Population	Household	Employment
2577	7,621	2,501	1,139	7,972	2,607	1,079	11,080	4,090	2,470
2578	2,482	888	716	2,629	936	578	3,630	1,470	1,190
2579	698	225	251	732	235	262	1,020	360	560
TOTAL	10,801	3,614	2,106	11,333	3,778	1,919	15,730	5,920	4,220

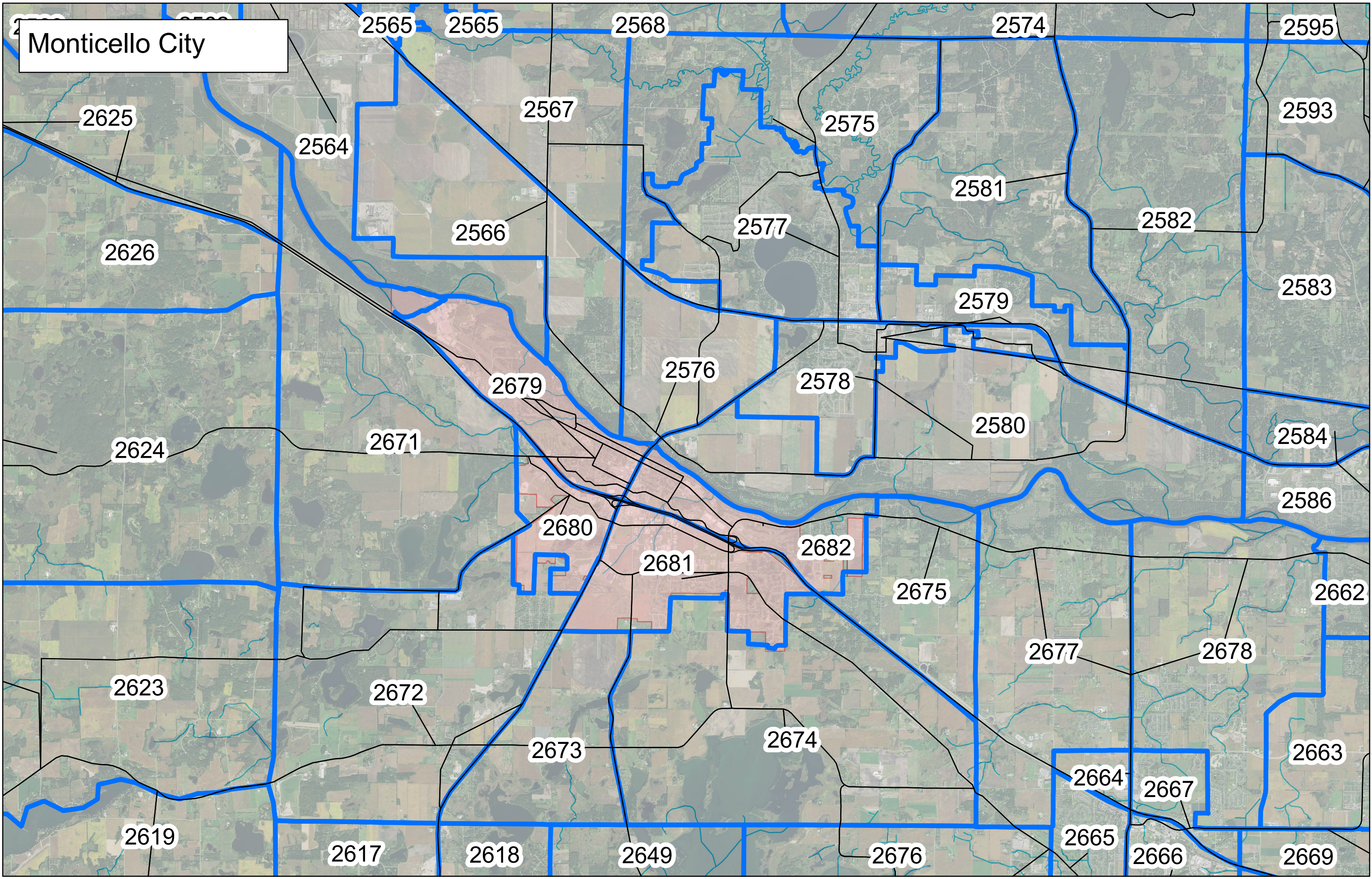
Big Lake Township



Big Lake Township

TAZ	Year 2010			Year 2014			Year 2040		
	Population	Household	Employment	Population	Household	Employment	Population	Household	Employment
2575	1,621	514	62	1,635	518	88	2,300	800	260
2576	228	76	25	237	79	411	380	140	380
2580	1,523	521	108	1,577	539	156	2,320	850	770
2581	1,173	385	39	1,204	395	49	1,630	590	450
2582	2,100	752	121	2,171	777	119	3,080	1,120	470
TOTAL	6,645	2,248	355	6,824	2,308	823	9,710	3,500	2,330

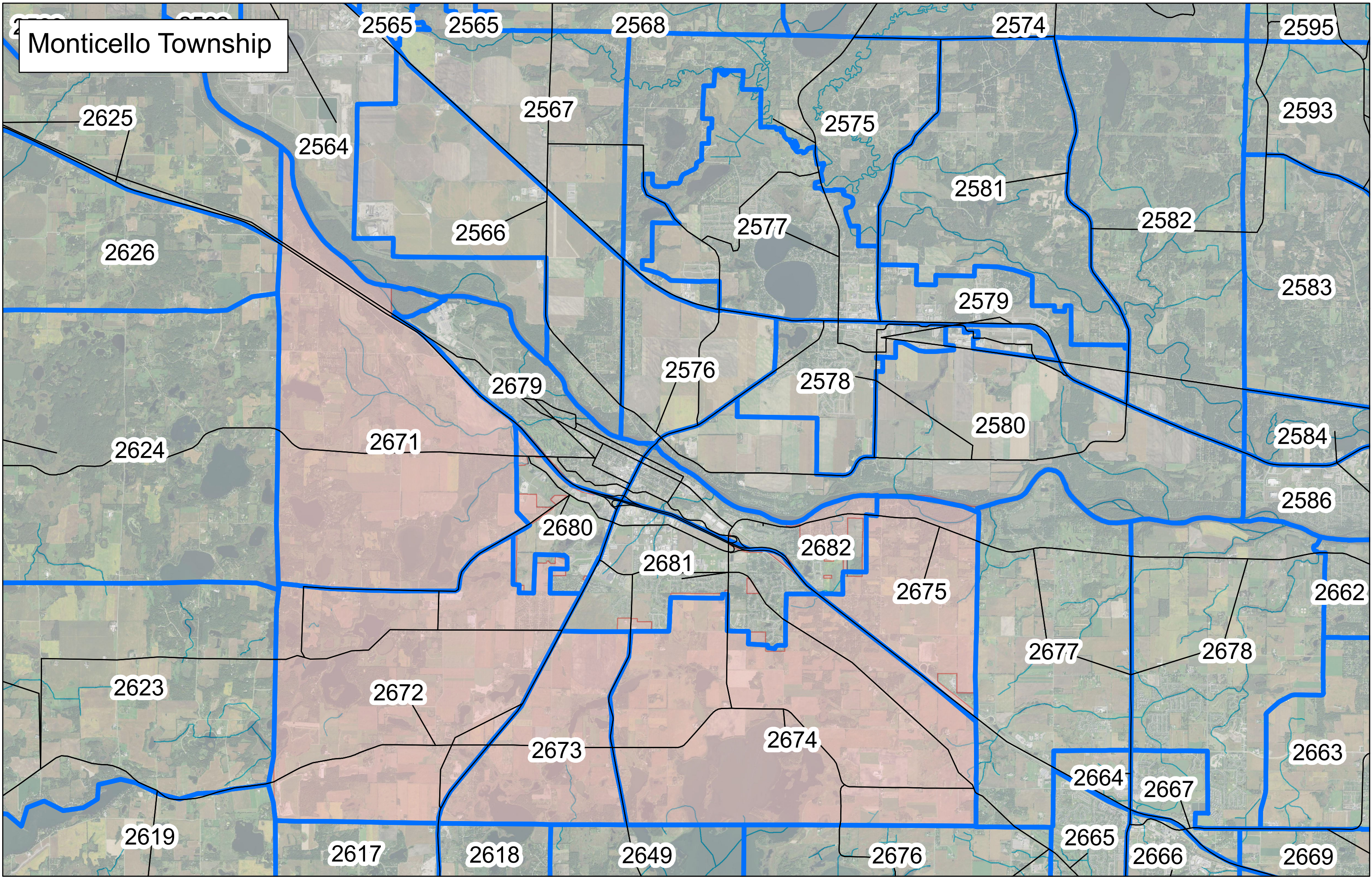
Monticello City



Monticello City

TAZ	Year 2010			Year 2014			Year 2040		
	Population	Household	Employment	Population	Household	Employment	Population	Household	Employment
2679	3,166	1,321	2,541	3,273	1,360	2,532	5,310	2,210	2,600
2680	1,774	561	620	1,820	573	736	2,720	980	770
2681	4,920	1,605	1,780	5,047	1,639	2,146	8,470	2,990	3,140
2682	3,327	1,363	1,841	3,416	1,395	1,881	5,390	2,280	3,470
TOTAL	13,187	4,850	6,782	13,556	4,967	7,295	21,890	8,460	9,980

Monticello Township



Monticello Township

TAZ	Year 2010			Year 2014			Year 2040		
	Population	Household	Employment	Population	Household	Employment	Population	Household	Employment
2671	815	276	26	831	281	33	1,220	470	1,520
2672	864	306	268	890	315	294	1,390	520	650
2673	104	42	0	106	43	7	190	80	130
2674	498	179	39	510	183	40	900	340	520
2675	472	166	11	487	171	14	800	310	240
TOTAL	2,753	969	344	2,824	993	388	4,500	1,720	3,060