



**FRAMEWORK** <sup>2030</sup>  
*partnering for the future*

# Regional Factbook Briefings

VOLUME 1: **PEOPLE**

Thursday, April 9, 2020

Framework 2030 is an initiative of the  
[Central Mississippi River Regional Planning Partnership](#)

*To find out more about Framework 2030, please visit:*

[www.RegionalPlanningPartnership.org/Framework2030](http://www.RegionalPlanningPartnership.org/Framework2030)

# Introduction

- **The following is a briefing from the conditions and trends research for Framework 2030**
- **The analysis is organized around three topics: People, Prosperity, and Place**

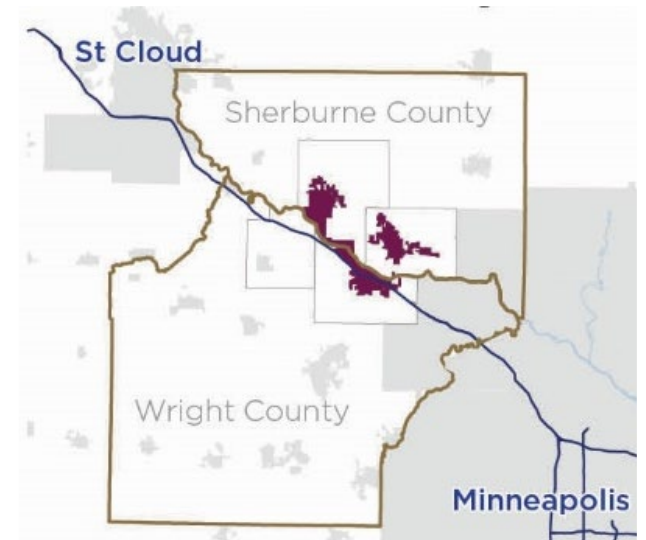
## **Framework 2030 and COVID-19**

These are challenging times for our communities and region. We are working diligently to meet our obligations while protecting everyone. Even as we act on critical current needs, we recognize the need to work together to plan the future. With significant growth and development projected for the region, the [Central Mississippi River Regional Planning Partnership](#) recently launched [Framework 2030](#) -- a collaborative effort to develop our region's first-ever strategic land use and economic development plan.

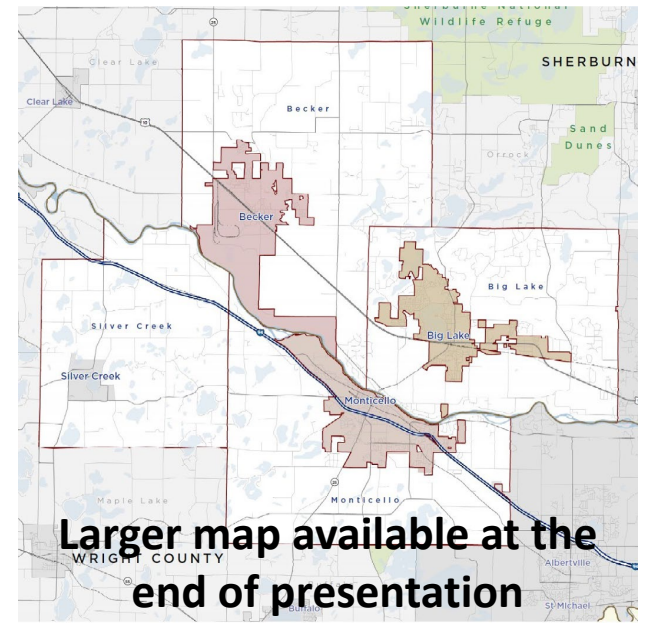
# Planning Context

- **There are two research definition areas based on the available data**
- **Regional Planning Area (RPA)**
  - *Most of the available information is at the county level, so the analyses below are for Wright and Sherburne counties.*
- **Focused Planning Area (FPA)**
  - *When possible, analyses will focus on the jurisdictions that are members of the Central Mississippi River Regional Planning Partnership.*

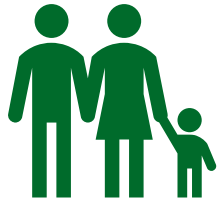
REGIONAL PLANNING AREA



FOCUSED PLANNING AREA



# Regional Factbook Topics



## PEOPLE

*Demographic conditions and trends*

### **Key topics:**

- *Population*
- *Household size and makeup*
- *Race and ethnicity*
- *Age, health & wellness*



Coming soon...

## PROSPERITY

*Personal and economic vitality*

### **Key topics:**

- *Economy & employment*
- *Personal prosperity*
- *Education & lifelong learning*



Coming soon...

## PLACE

*Place-based conditions and trends*

### **Key topics:**

- *Community character and development patterns*
- *Land use and zoning*
- *Mobility*
- *Housing*

*With additional topics added throughout the research and analysis ...*

# PEOPLE | KEY HIGHLIGHTS

- **Significant population growth, but not evenly distributed across the region**
- **Shrinking household size, but faster family formation and growth compared to state**
- **Young for Minnesota, but aging faster than the state's rate of change**
- **Increasing racial and ethnic diversity, but still more white than the state**



# PEOPLE | POPULATION



- **Fastest growing region in Minnesota**
  - *2nd and 3rd fastest growing counties, trail only Scott County (south metro)*
  - *The seven fastest growing counties in state surround the Minneapolis – St. Paul Metro Area*
- **Population increase not evenly distributed across the region**
  - *Communities in the southeast of Wright and Sherburne Counties are growing the fastest*

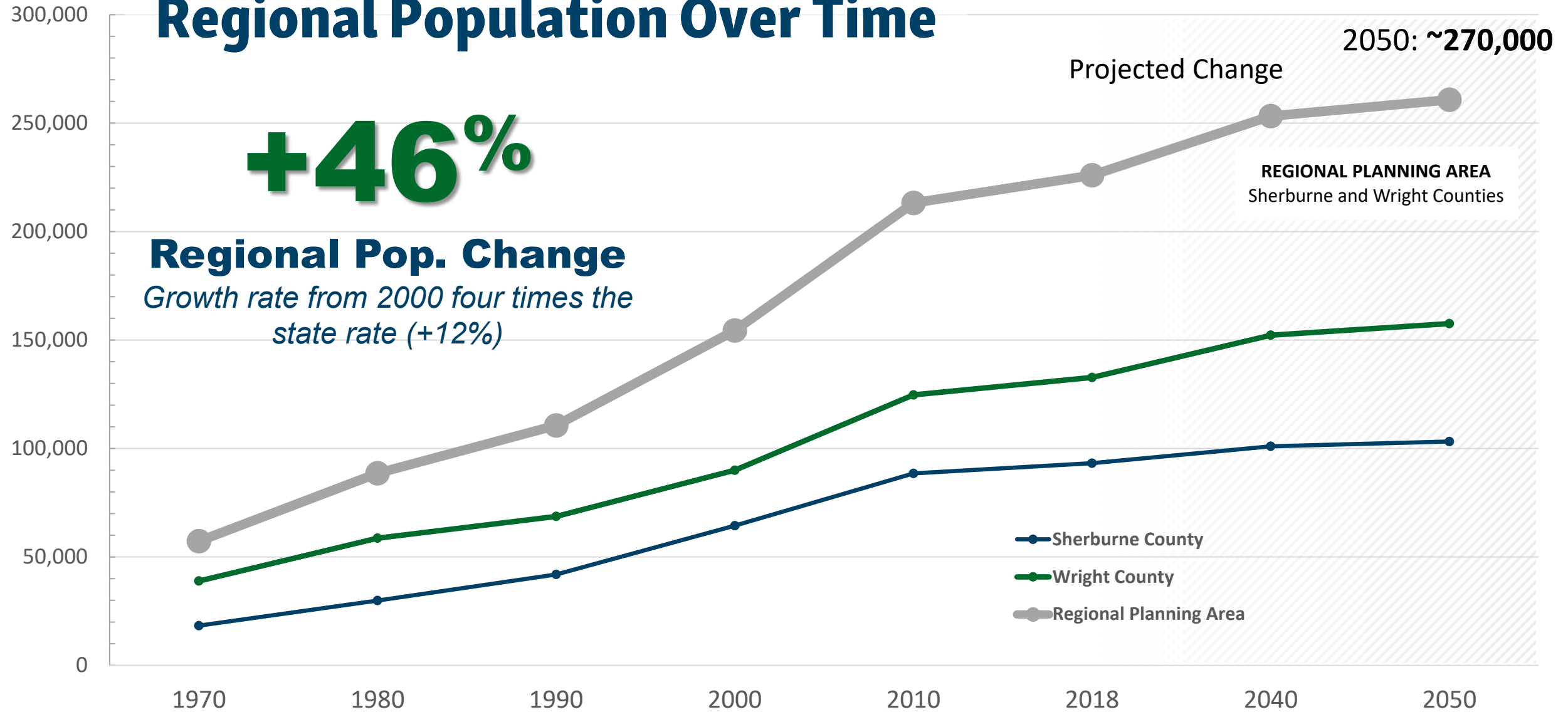
# +71,573

**Regional Pop. Change**  
*From 2000 to 2018, four times faster growth compared to the state*

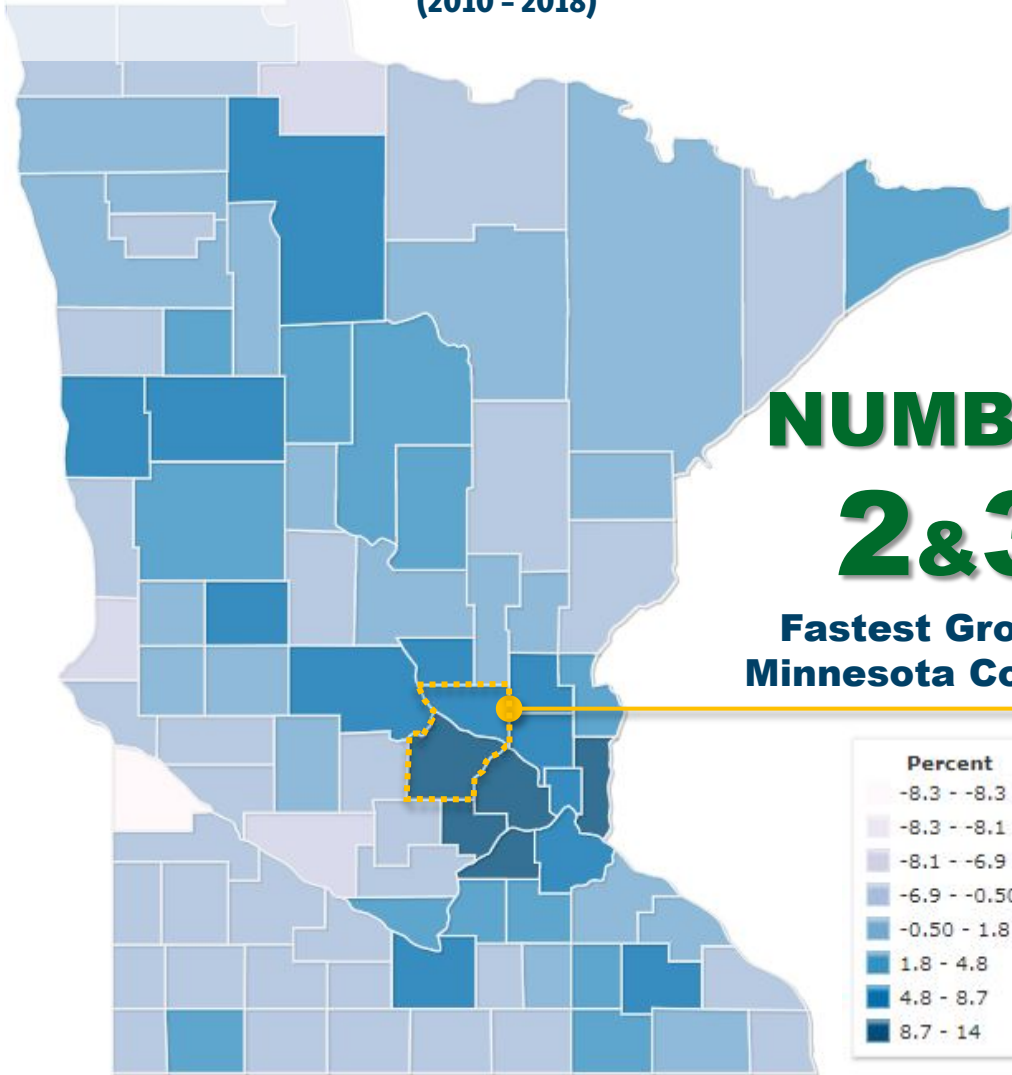
# Regional Population Over Time

**+46%**

**Regional Pop. Change**  
Growth rate from 2000 four times the  
state rate (+12%)

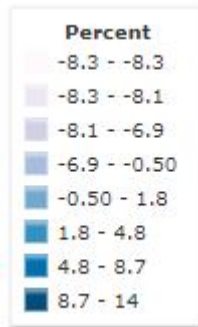


## State Population Change by County (2010 - 2018)

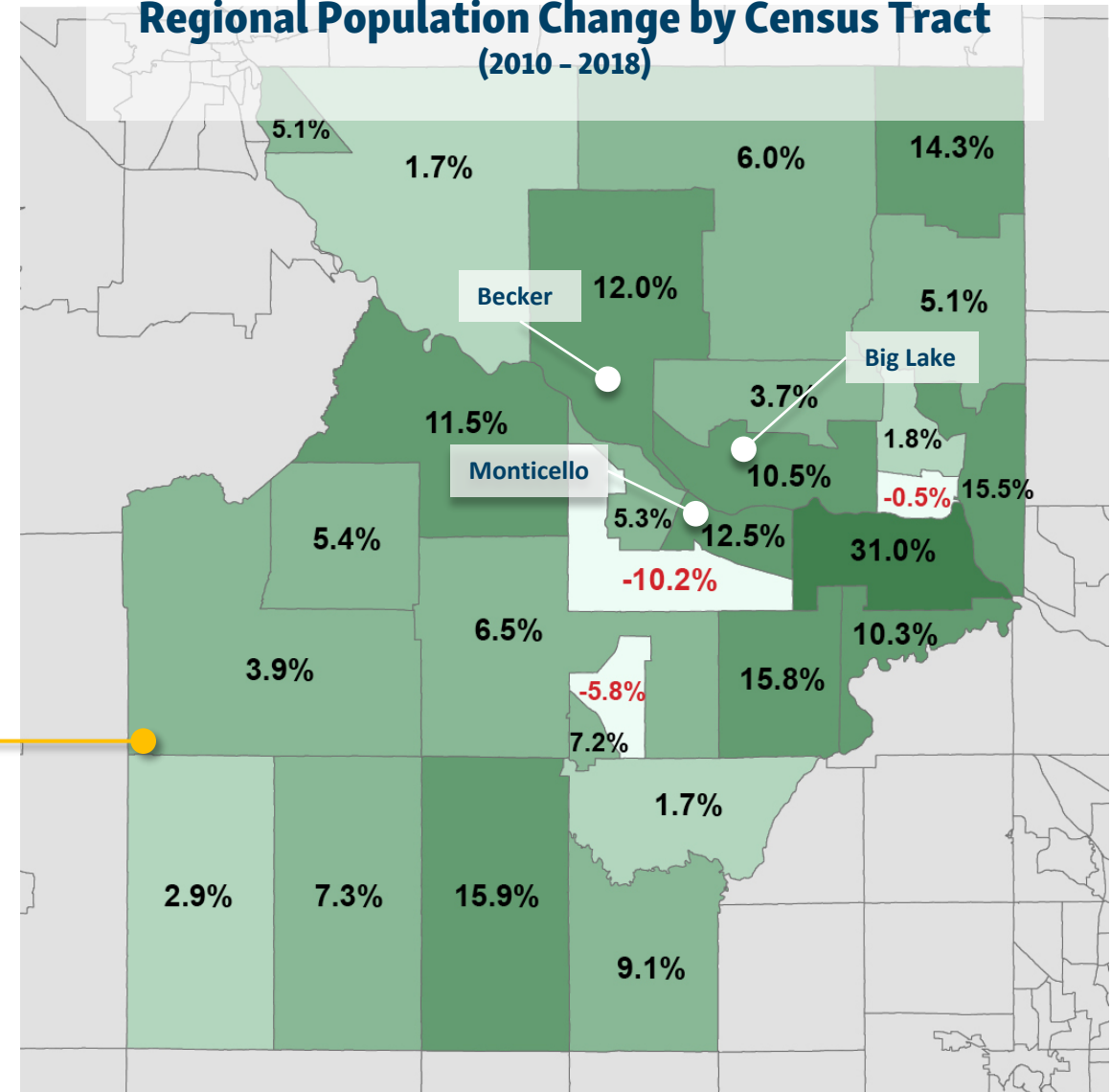


**NUMBER  
2&3**

**Fastest Growing  
Minnesota Counties**



## Regional Population Change by Census Tract (2010 - 2018)





# PEOPLE | HOUSEHOLDS



- **Significant growth in households**
  - *Region added 26,000 from 2000 to 2018*
  - *50% increase, 14% state, faster than population increase*
- **Faster growth in family households**
  - *30% increase in households with children under 18, decrease of 1% in the state*
- **Households with a member over 65 – the fastest growing segment**
  - *105% growth, 8,700 new households*

**+25,973**

## **New Households**

*From 2000 to 2018, a 50% increase compared to 14% for the state*

# Fastest Growing Household Types

1



**+105%**

**Households with one  
or more people 65+  
+8,700**

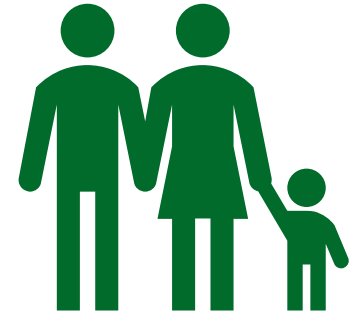
2



**+60%**

**Persons living  
alone  
+5,500**

3



**+30%**

**Households with  
children under 18  
+6,000**

# PEOPLE | AGE



- **Younger than the state, but aging faster**
  - *Regional median age, 36.2 years, Minnesota, 37.9*
  - *12% increase, four years from 2000 (2.5 years increase Minnesota)*
- **Significant growth in over-65 cohort**
  - *13,000 more residents above retirement age*
  - *One in five residents over 65*
- **Younger cohorts growing slower**

# 36.2

**Region's Median Age**  
*Increasing four years from 2000*

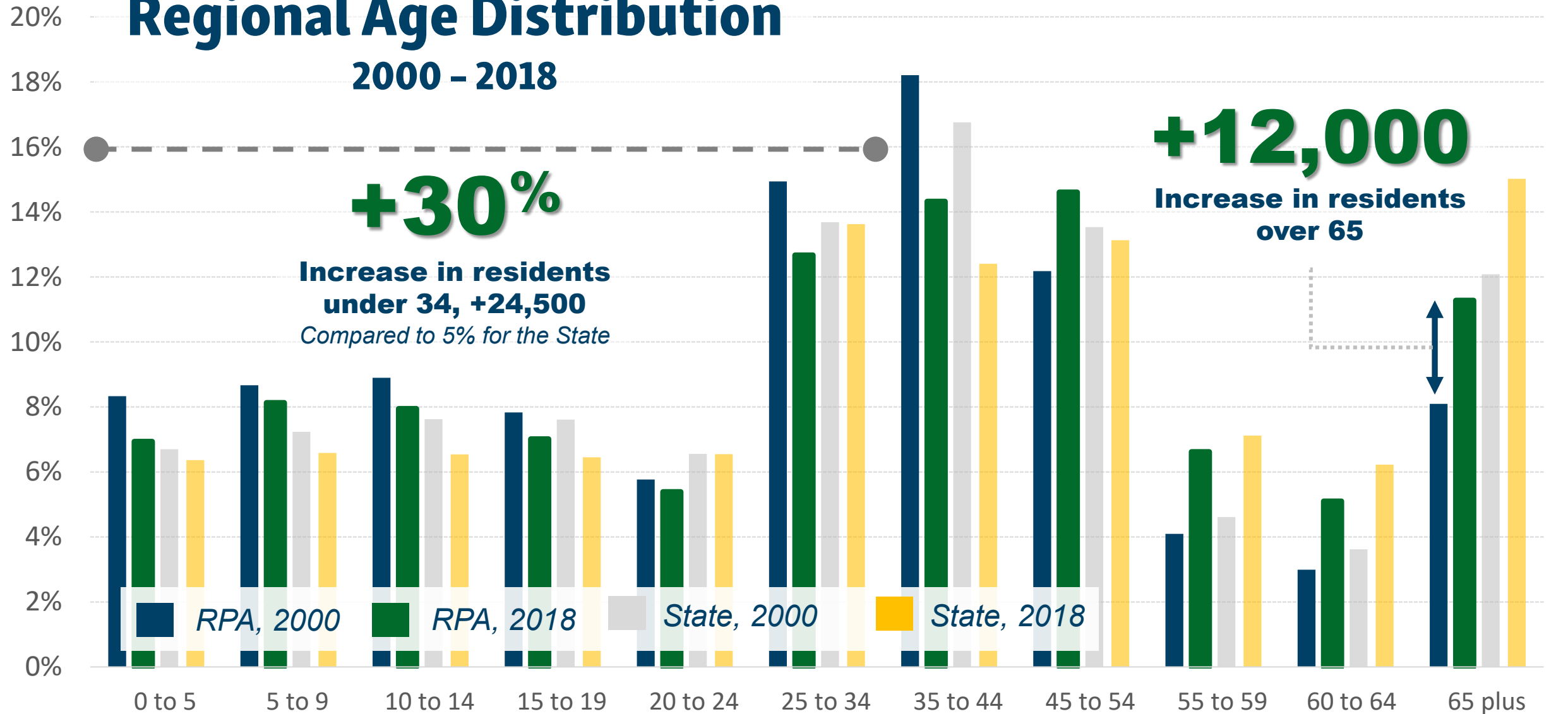


**1 in 5 Residents  
is over 65**

*Fastest growing cohort regionally (+100%), outpacing state (+40%)*

# Regional Age Distribution

2000 - 2018



# PEOPLE | DIVERSITY



- **Growth in share residents of color**
  - *From 3 to 6 % of overall population*
  - *More racially homogeneous than the state overall (83% white, 17% people of color)*
- **Significant growth in Hispanic and Latinx community**
  - *Tripled from 2000, up 5,000 residents*
  - *3% of overall population*
- **Growth in residents born abroad**
  - *+250% increase from 2000*
  - *Largest share from Latin America, fastest growing from Africa*

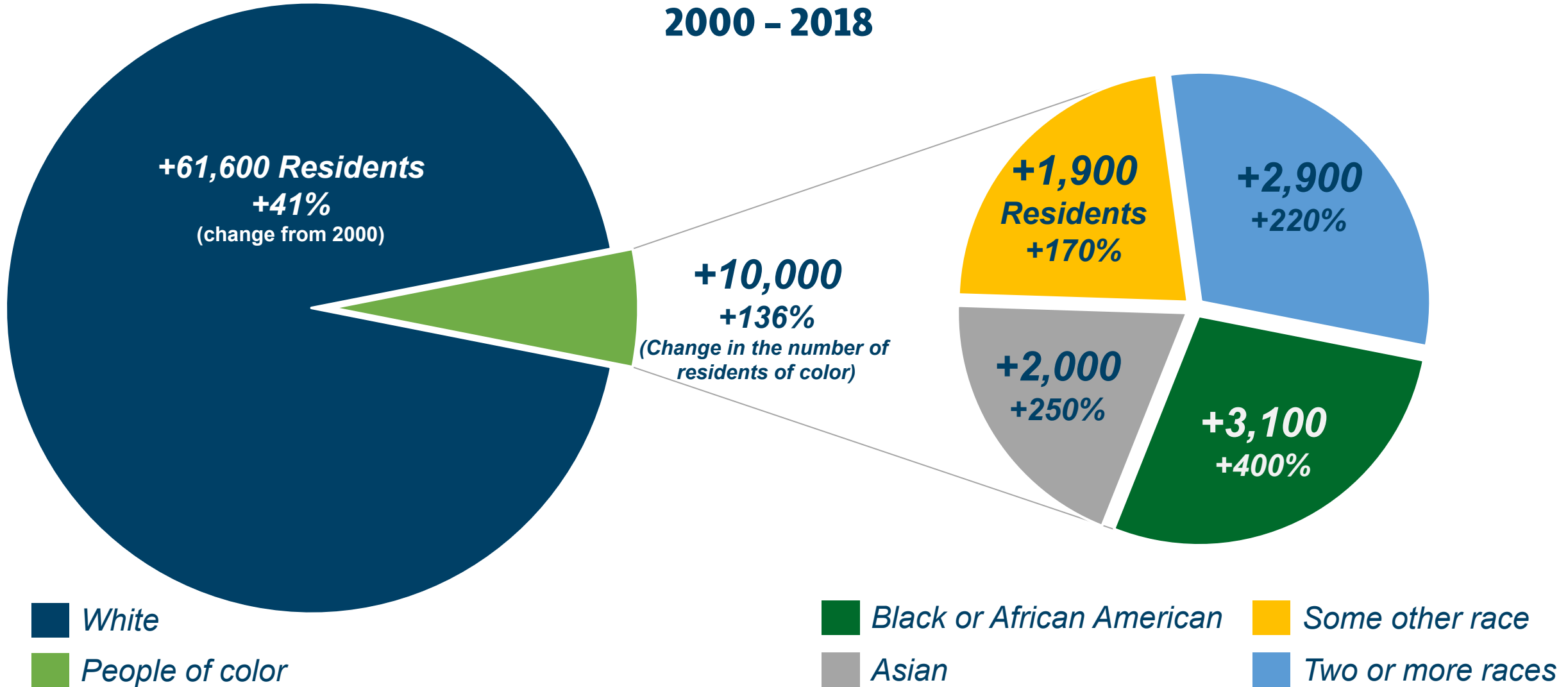
## +260%

### Change in Hispanic & Latinx Population

*Increase of 5,000 residents from 2000, +77% state*

# Regional Race Distribution and Change

2000 - 2018



# Coming up next ...



## PROSPERITY

### Topics include

- *The economy and local employment*
- *Levels of personal prosperity*
- *Assessment of educational attainment and lifelong learning*
- *Health and wellness*



# Questions?

- **Do you have questions about the findings or ideas for future areas of research and analysis?**
- **Contact the planning team through email, [regionalplanningpartnership@gmail.com](mailto:regionalplanningpartnership@gmail.com)**
- **Don't forget to share the presentation with your networks or anyone else you think would be interested.**





# Additional Information

**FRAMEWORK** <sup>2030</sup>  
*partnering for the future*

# A little more about FRAMEWORK 2030

- **Our communities anticipate significant growth over the coming decades**
- **There are many dynamic forces (internal and external) that may impact our quality of life, place, and opportunity**
- **We have an opportunity to act and take advantage of this time and energy**



# Who's involved?

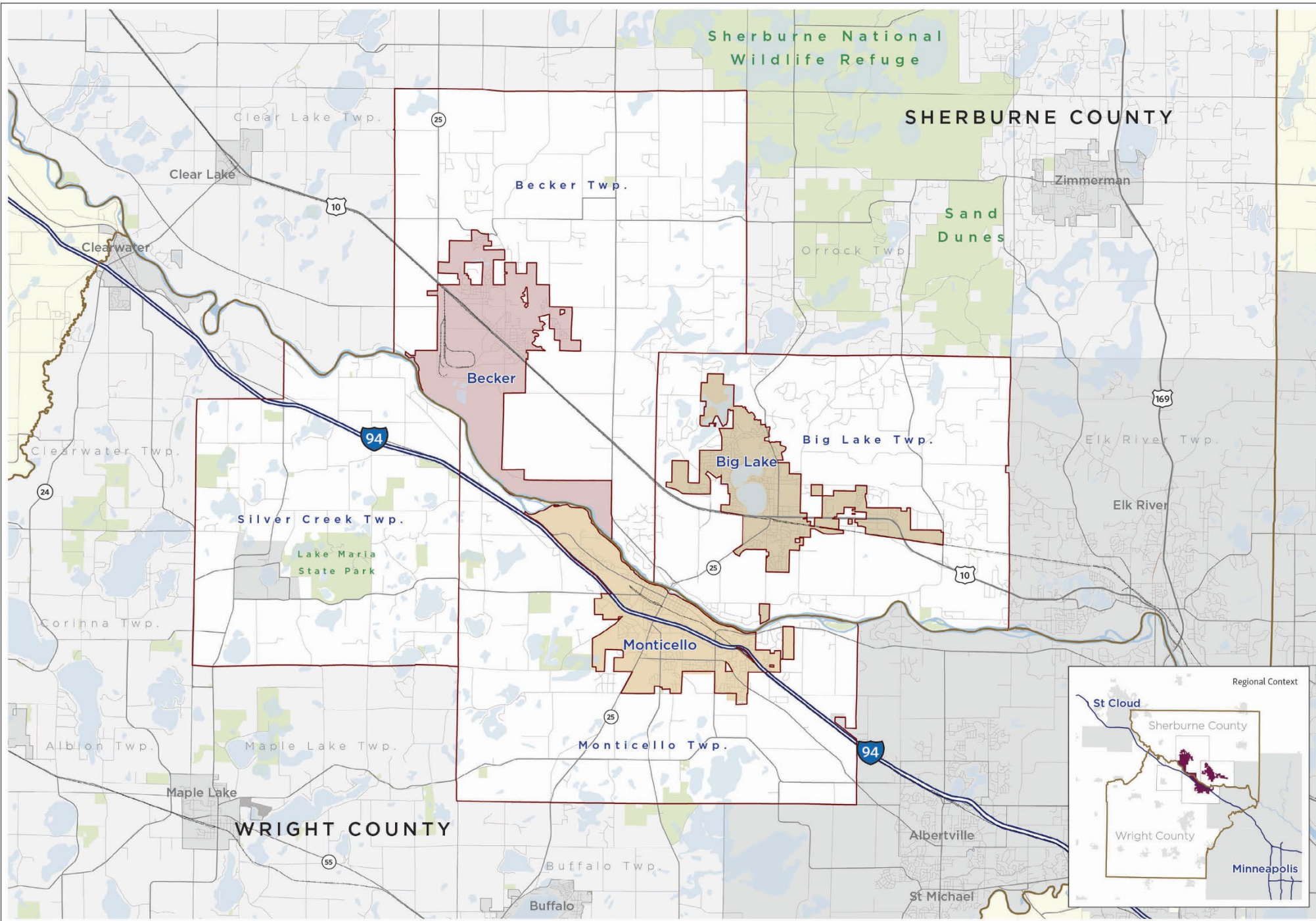
## Led by the Central Mississippi River Regional Planning Partnership

- *Cities of Becker, Big Lake, and Monticello; Becker, Silver Creek, Monticello, and Big Lake townships; and Sherburne and Wright counties*
- *Coalition formed in 2016 focused on transportation issues*
- *Partnership's evolving focus on regional challenges and opportunities*



# The Planning Area

-  Interstate
-  US Highway
-  State Highway
-  Participating Townships
-  Surrounding Counties
-  Other Cities
-  City of Becker
-  City of Monticello
-  City of Big Lake
-  Park Land
-  Mississippi River
-  Open Water



# The Project

- **Four components to the work plan**
  1. *Preparation*
  2. *Engagement*
  3. *Analysis*
  4. *Framework Development*
- **Integrate the intuition of the public and stakeholders with strong technical analysis**

## What are the goals for the project?

Through the planning project, the Partnership will work to:

- Reach consensus on major opportunities and choices that benefit the region, and successfully collaborate to maximize benefit and minimize risk;
- Position Partners to be leaders and shape their own futures individually and collectively, and;
- Support connectivity within the region, and between the region and beyond.

## PREPARATION

### COMPONENT 1 **Preparation**

Kick-off the project

Develop a strategy for promoting the plan and motivating participation

Create a plan for community engagement

## ENGAGEMENT

### COMPONENT 3 **Technical Analysis**

Research key challenges and opportunities facing the region

### COMPONENT 2 **Community Engagement**

Think big about the future of the region and its communities

## PLANNING

### COMPONENT 4 **Plan Development**

Finalize the Framework action plan

### **BIG PICTURE** SPRING 2020

Get the conversation started and think about our goals for the future

### **TESTING THE DIRECTION** SUMMER 2020

Affirm our goals and build actions for reaching our goals

### **OPEN HOUSE** WINTER 2020

Identify priorities and implementation strategies



# How can you get involved?

- **Access the project website**  
[www.RegionalPlanningPartnership.org/  
Framework2030](http://www.RegionalPlanningPartnership.org/Framework2030)
- **On the website you can ...**
  - *Find out more about the project;*
  - *Share your ideas through a community survey, and;*
  - *Contact the planning team with any questions or ideas.*





**FRAMEWORK** 2030  
*partnering for the future*

*To find out more, please visit:*

[www.RegionalPlanningPartnership.org/Framework2030](http://www.RegionalPlanningPartnership.org/Framework2030)