



FRAMEWORK ²⁰³⁰
partnering for the future

Regional Factbook Briefings

VOLUME 2: **PROSPERITY**

Thursday, April 16, 2020

Framework is an initiative of the
[Central Mississippi River Regional Planning Partnership](#)

To find out more about Framework 2030, please visit:

[**www.RegionalPlanningPartnership.org/Framework2030**](http://www.RegionalPlanningPartnership.org/Framework2030)

Introduction

- **The following is a briefing from the conditions and trends research for Framework 2030**
- **The analysis is organized around three topics: People, Prosperity, and Place**

Framework 2030 and COVID-19

These are challenging times for our communities and region. We are working diligently to meet our obligations while protecting everyone. Even as we act on critical current needs, we recognize the need to work together to plan the future. With significant growth and development projected for the region, the [Central Mississippi River Regional Planning Partnership](#) recently launched [Framework 2030](#) -- a collaborative effort to develop our region's first-ever strategic land use and economic development plan.

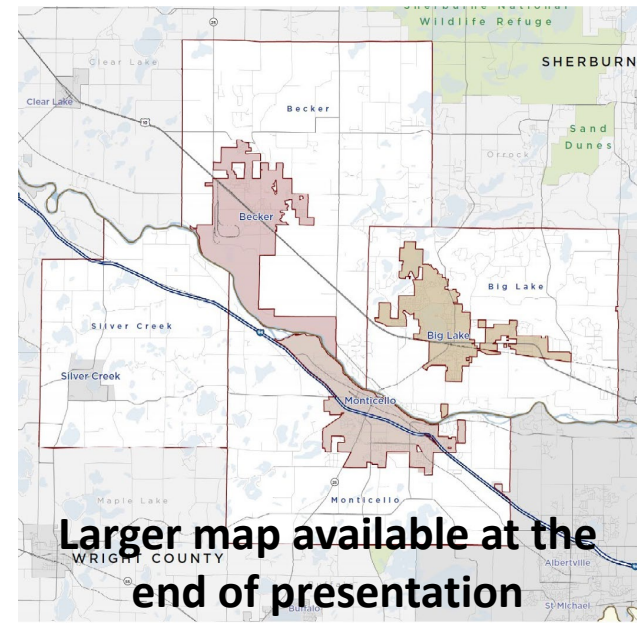
Planning Context

- **There are two research definition areas based on the available data**
- **Regional Planning Area (RPA)**
 - *Most of the available information is at the county level, so the analyses below are for Wright and Sherburne counties.*
- **Focused Planning Area (FPA)**
 - *When possible, analyses will focus on the jurisdictions that are members of the Central Mississippi River Regional Planning Partnership.*

REGIONAL PLANNING AREA



FOCUSED PLANNING AREA



Regional Factbook Topics



[Now available
online](#)

PEOPLE

Demographic conditions and trends

Key topics:

- *Population*
- *Household size and makeup*
- *Race and ethnicity*
- *Age, health & wellness*



PROSPERITY

Personal and economic vitality

Key topics:

- *Economy & employment*
- *Personal prosperity*
- *Education & lifelong learning*



Coming soon...

PLACE

Place-based conditions and trends

Key topics:

- *Community character and development patterns*
- *Land use and zoning*
- *Mobility*
- *Housing*

With additional topics added throughout the research and analysis ...

PROSPERITY | KEY HIGHLIGHTS

- **Shifts in employment by industrial sector, overall growth in GDP, total jobs, and the number of business establishments**
- **Most regional employees commute in from outside the region, and most regional residents commute to work outside**
- **Higher levels of personal and family prosperity compared to the state; consistent levels of educational attainment**

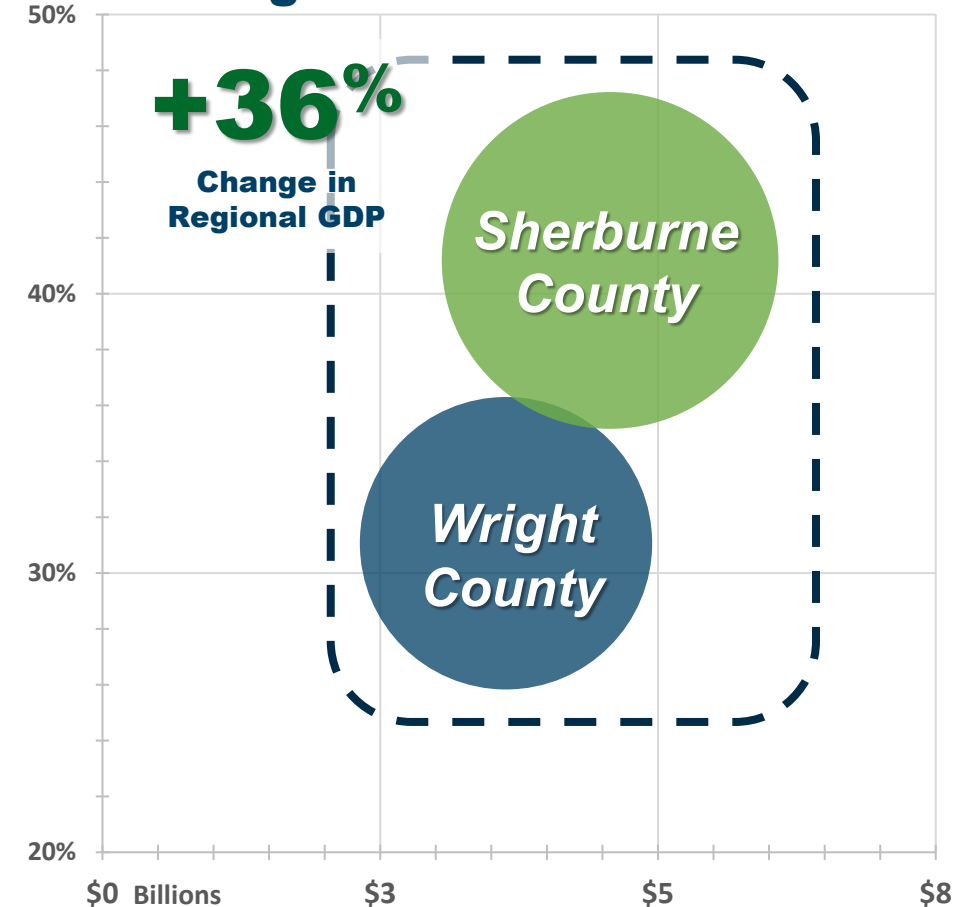


PROSPERITY | ECONOMY & EMPLOYMENT













- **Regional GDP \$8.2 billion in 2018**
 - \$2.1 billion increase from 2010
 - 2018: Number 12 and 13 ranked counties in terms of economic output in the state
- **Over 10,500 jobs have been added since the recession or 2008/2009**
 - Regional job growth is outpacing household growth (Households measure the population divided by the number of occupied housing units, i.e., families, roommates, etc.)
- **7 of the top 10 regional employers are public entities**

Change in GDP 2010 to 2018



Top 10 Regional Employers (2018)**



	1 Elk River ISD*	1,445	Public School System
	2 Buffalo-Hanover-Montrose ISD	782	Public School System
	3 Wright County	763	County Government
	4 St. Michael-Albertville ISD	725	Public School System
	5 Xcel	700	Energy Production
	6 Sherburne County	697	County Government
	7 Walmart	675	Retail
	8 Big Lake ISD	649	Public School System
	9 CentraCare Health	600	Hospitals/Clinics
	10 Monticello ISD	576	Public School System

*ISD: Independent School District

**Reflecting full-time employment

69,364

Total Regional Jobs

Increase of 10,500 from 2009

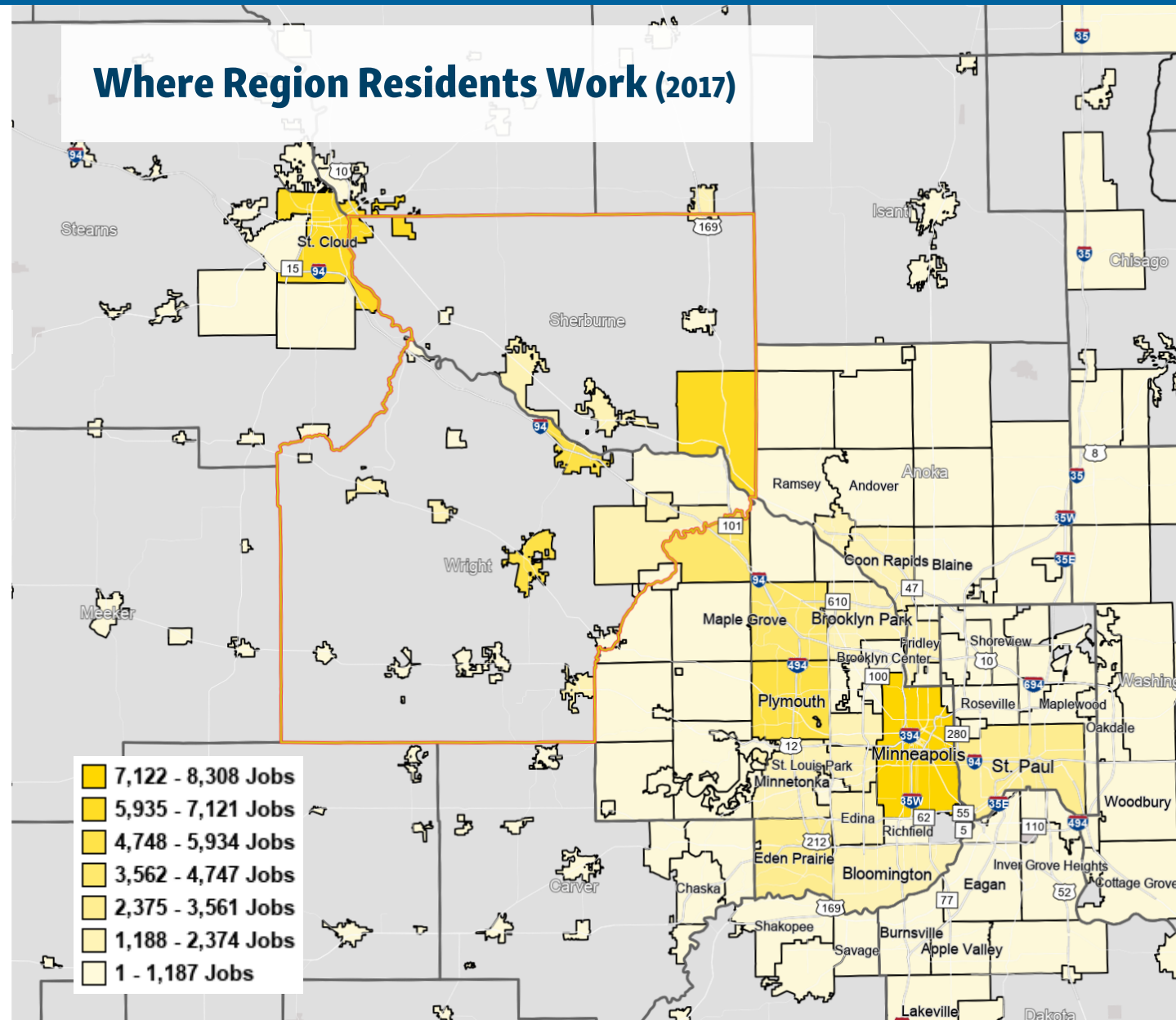
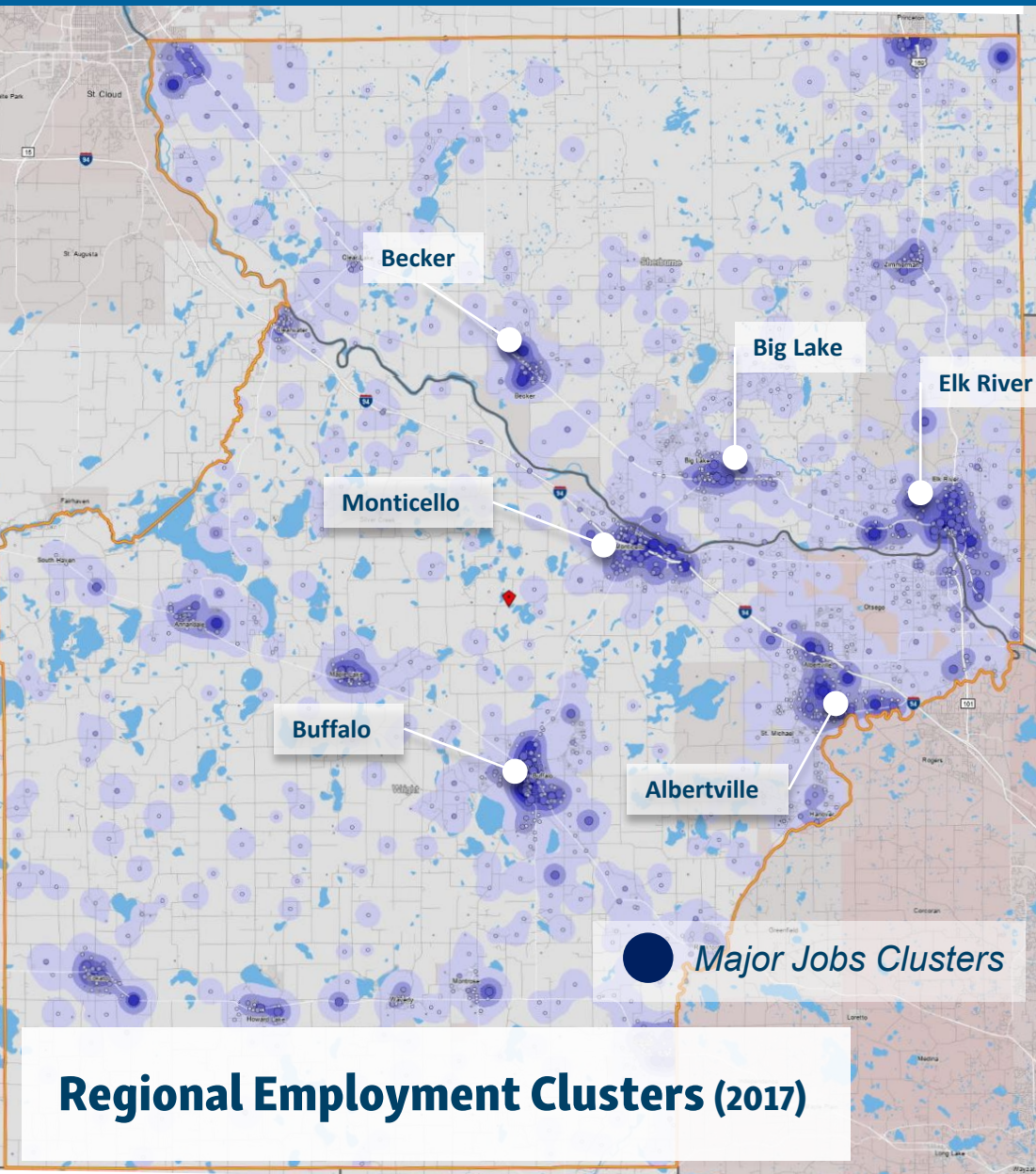
Job Growth from 2009

+17%

Sherburne County

+26%

Wright County



Regional Employment Industries (2018)

Educational, health and social services, 21.1%

Manufacturing, 16.2%

Retail trade, 11.5%

Construction, 9.8%

Professional, scientific, management, administrative, and waste management services, 8.9%

Arts, entertainment, recreation, accommodation and food services, 6.5%

Transportation and warehousing, and utilities, 5.6%

Other services (except public administration), 4.2%

Finance, insurance, real estate, and rental and leasing, 6.5%

Wholesale trade, 3.8%

Public administration, 3.2%

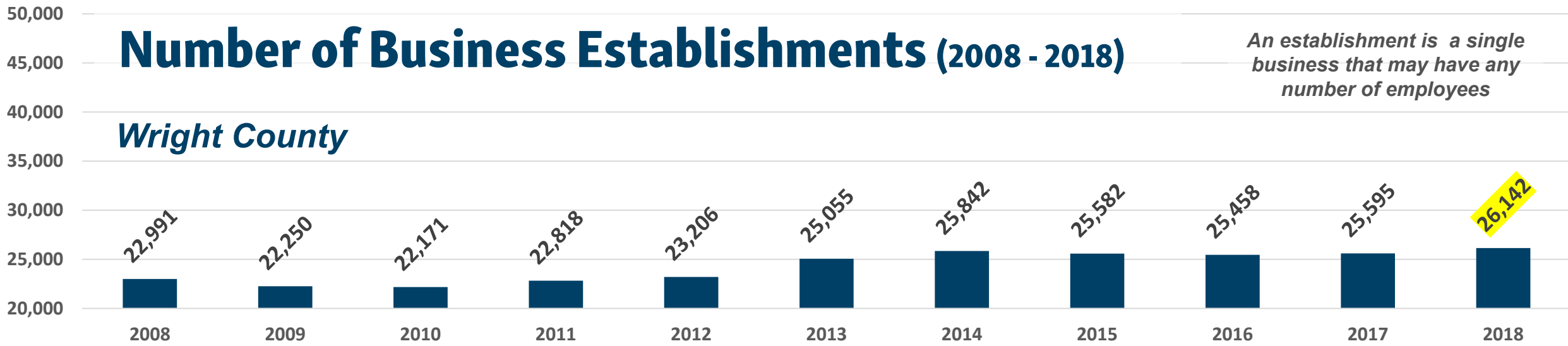
Agriculture, forestry, fishing and hunting, and mining, 1.5%

Information, 1.1%

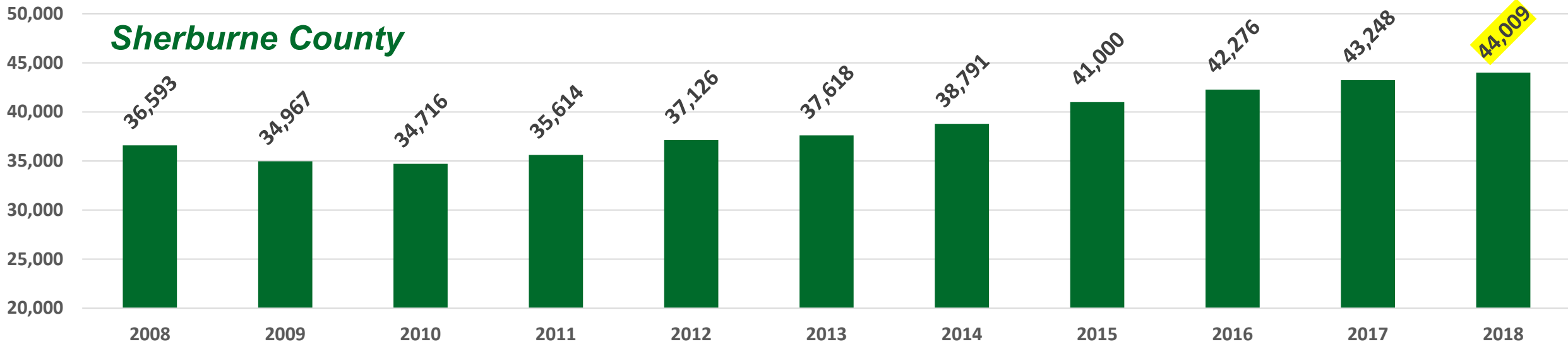
Number of Business Establishments (2008 - 2018)

An establishment is a single business that may have any number of employees

Wright County



Sherburne County



PROSPERITY | ECONOMY & EMPLOYMENT

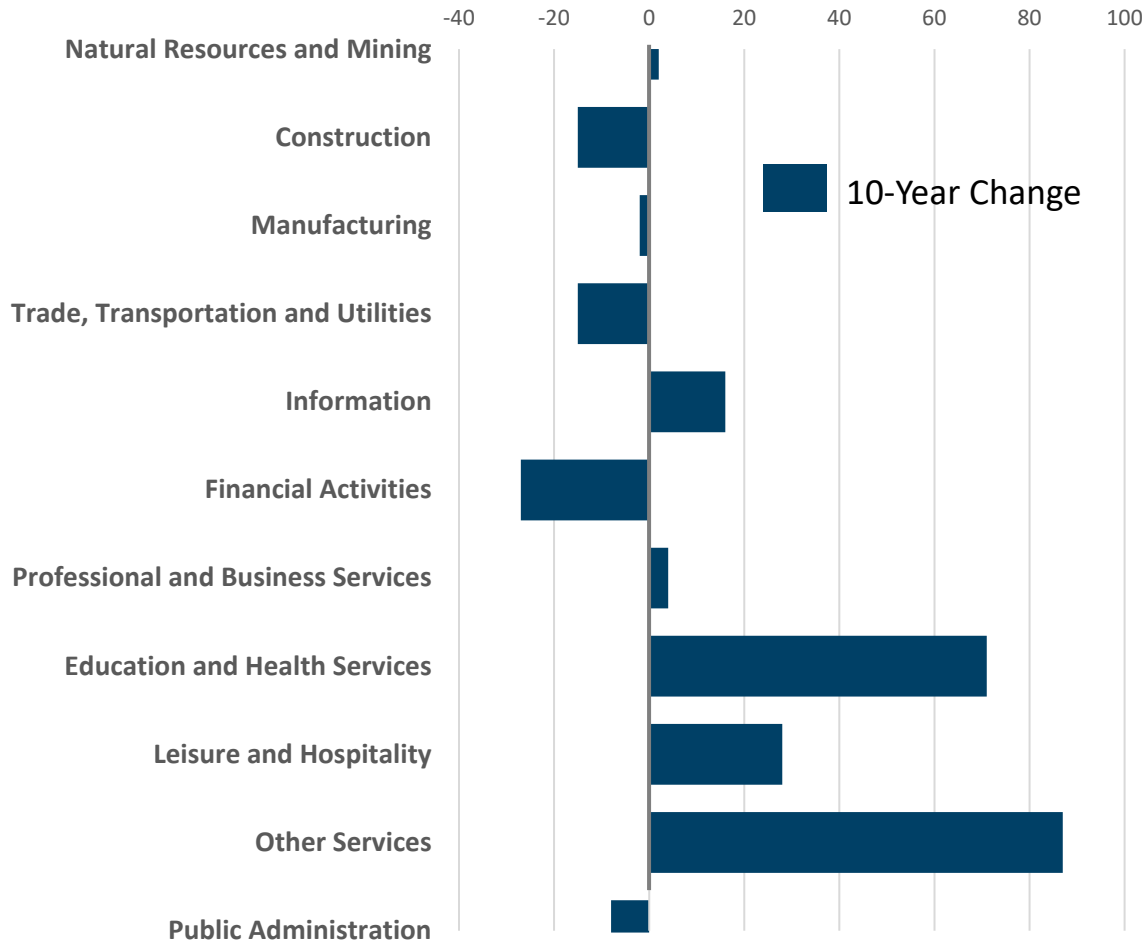
- **Growing sectors of the economy (as measured by the number of business establishments) will require different building forms**
 - *Some construction businesses may have been replaced by self-employed workers*
 - *Professional and financial services may be underreported due to self-employment*



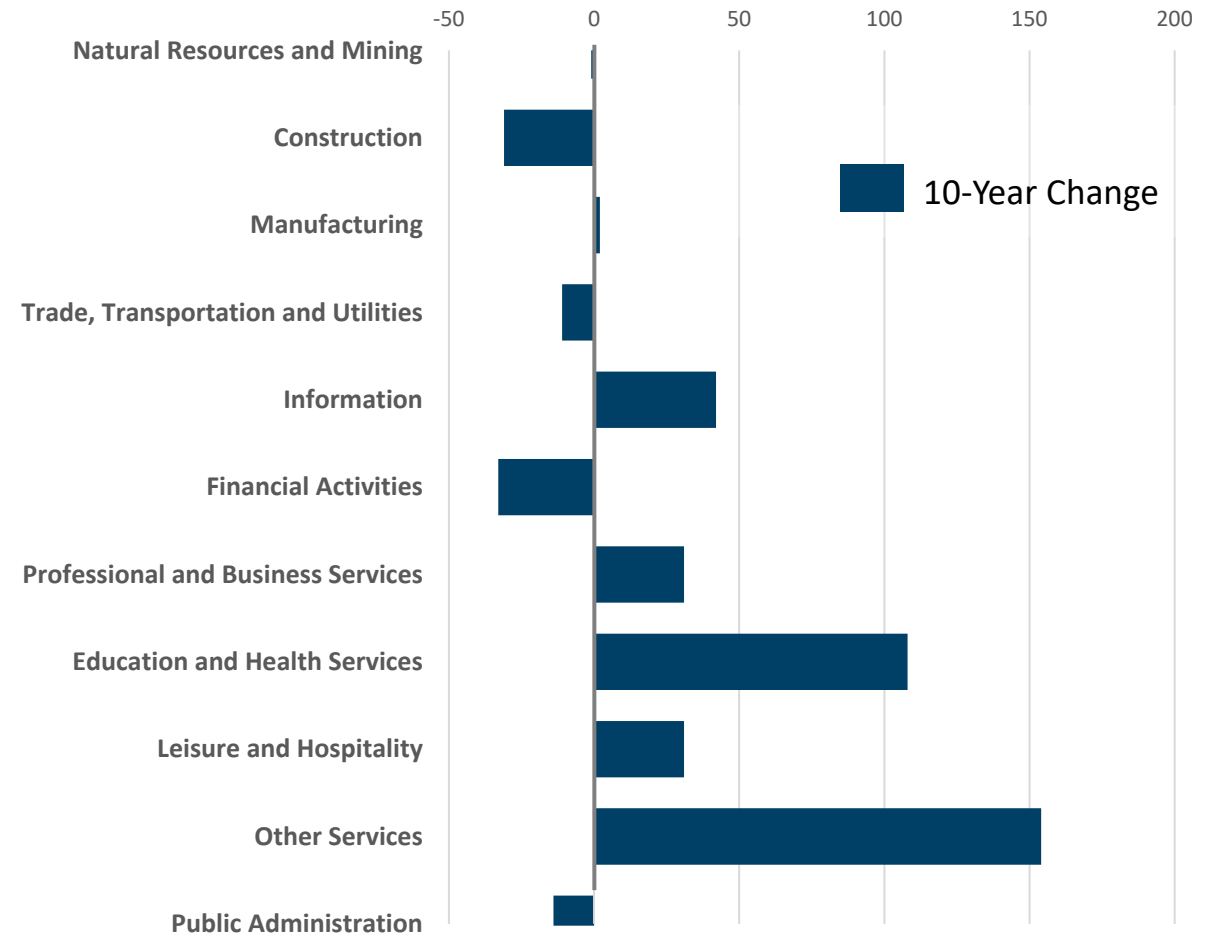
Change in the Number of Establishments by Sector (2008 - 2018)



Sherburne Establishment Change



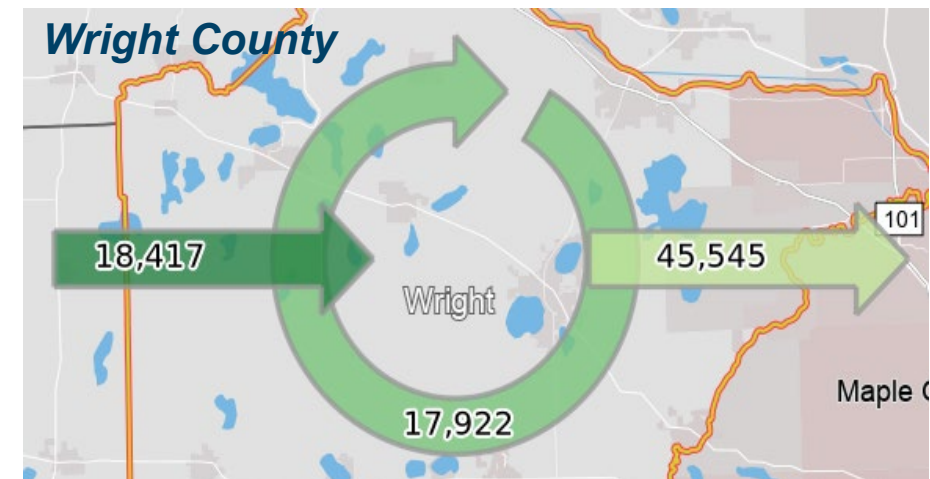
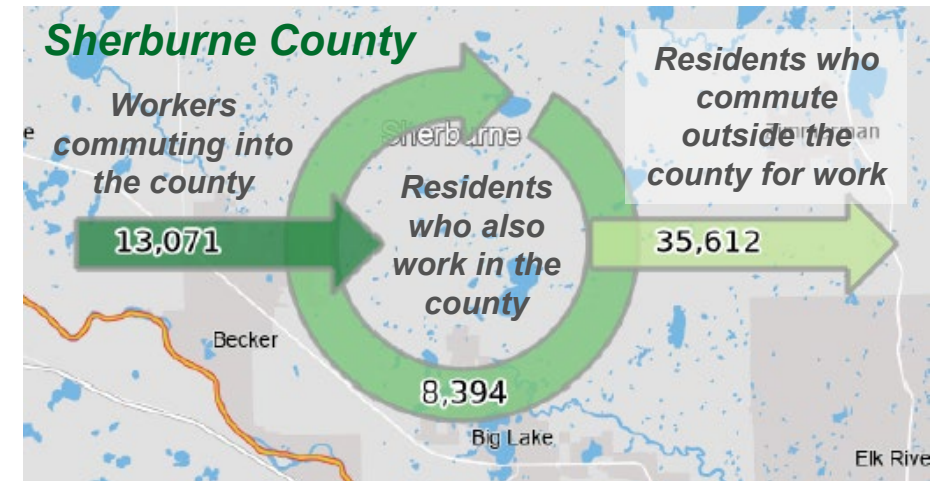
Wright Establishment Change



PROSPERITY | ECONOMY & EMPLOYMENT



- **Most regional employees commute in from outside the region, and most regional residents commute to work outside**
- **Job growth particularly in Sherburne has been fueled largely by workers from outside the county**
- **Average commute time ~30 minutes one way, 10 minutes higher than state average**



PROSPERITY | PERSONAL PROSPERITY



- **Regional median household income \$15,000 higher than the state**
 - *50% increase from 2000, outpacing the state's growth, 45%*
 - *Rates of poverty lower than the state average*
- **Higher rates of home ownership (82%) compared to the state 63%**
- **40% of renters pay more than 35% of income for rent, i.e., they are cost-burdened**

\$83,850
Median Household Income

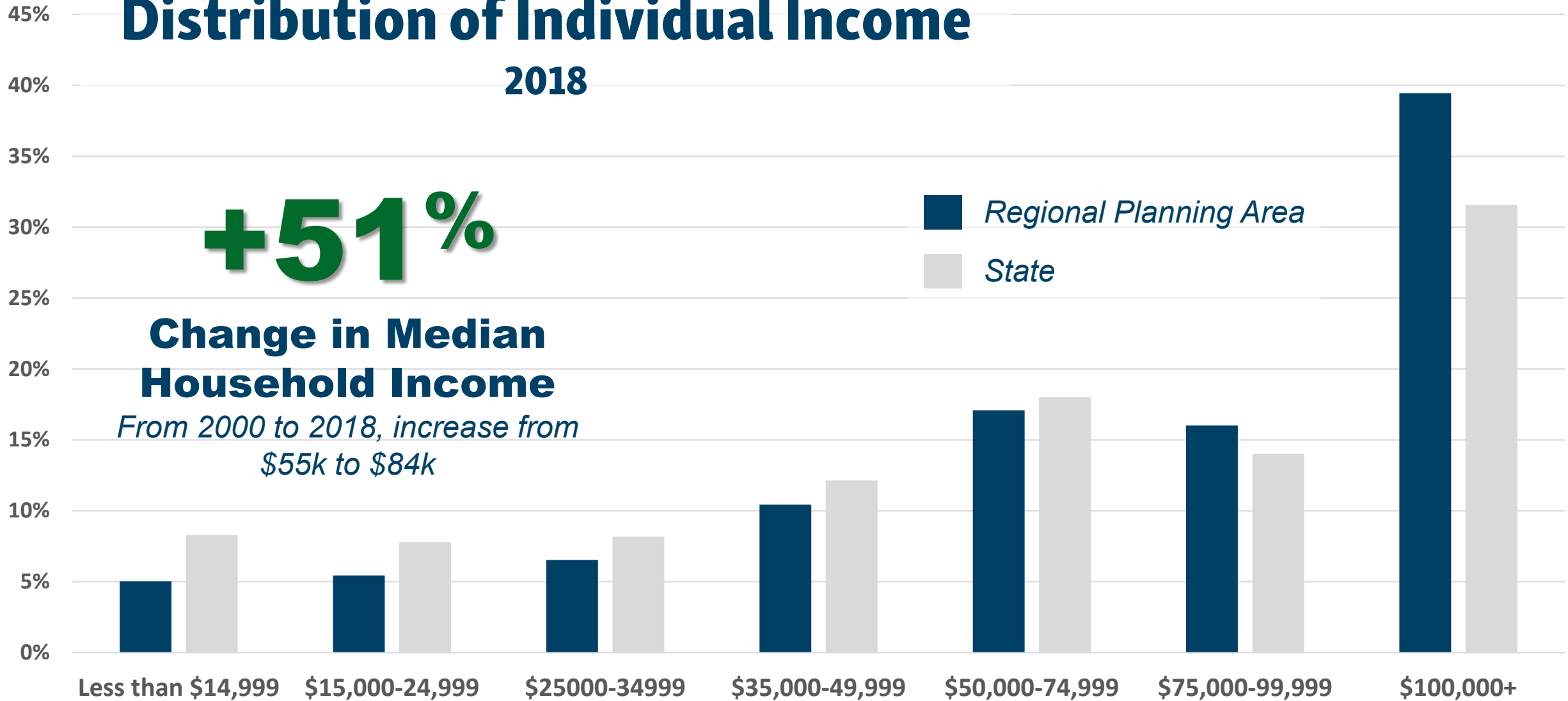
Distribution of Individual Income

2018

+51%

Change in Median Household Income

From 2000 to 2018, increase from \$55k to \$84k

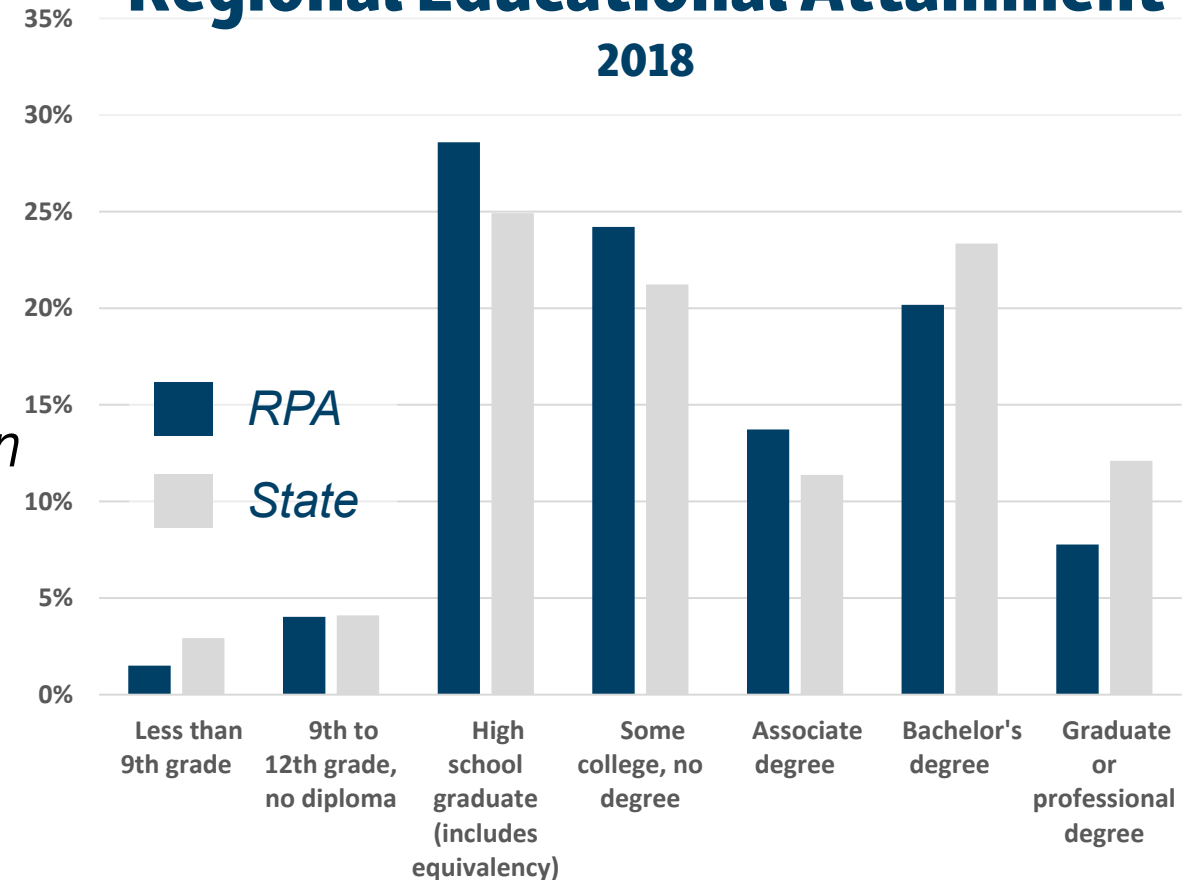


PROSPERITY | LIFELONG LEARNING



- **Levels of educational attainment reflective of state averages**
 - *Slightly lower percentage of college degrees*
 - *High HS graduation rates >90%*
 - *6% of UM–Twin Cities students from the Region*
- **Slightly lower preschool enrollment**
 - *6% under the age of 3, 7% state*

Regional Educational Attainment



Coming up next ...



PLACE

Topics include

- *Community character and development patterns*
- *Land use and zoning*
- *Mobility*
- *Housing*



Additional Information

FRAMEWORK ²⁰³⁰
partnering for the future

A little more about FRAMEWORK 2030

- **Our communities anticipate significant growth over the coming decades**
- **There are many dynamic forces (internal and external) that may impact our quality of life, place, and opportunity**
- **We have an opportunity to act and take advantage of this time and energy**



Who's involved?

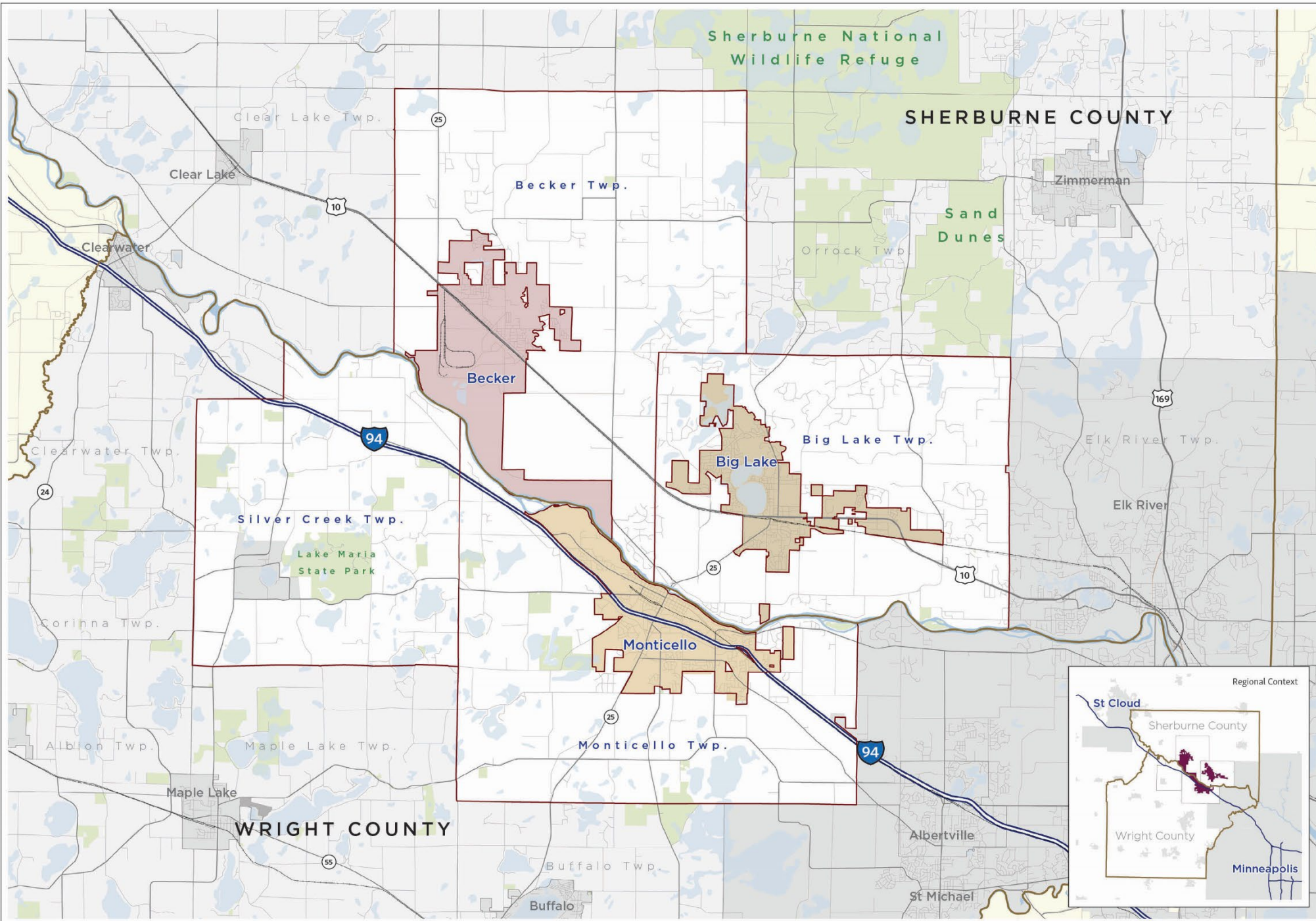
Led by the Central Mississippi River Regional Planning Partnership

- *Cities of Becker, Big Lake, and Monticello; Becker, Silver Creek, Monticello, and Big Lake townships; and Sherburne and Wright counties*
- *Coalition formed in 2016 focused on transportation issues*
- *Partnership's evolving focus on regional challenges and opportunities*



The Planning Area

-  Interstate
-  US Highway
-  State Highway
-  Participating Townships
-  Surrounding Counties
-  Other Cities
-  City of Becker
-  City of Monticello
-  City of Big Lake
-  Park Land
-  Mississippi River
-  Open Water



The Project

- **Four components to the work plan**
 1. *Preparation*
 2. *Engagement*
 3. *Analysis*
 4. *Framework Development*
- **Integrate the intuition of the public and stakeholders with strong technical analysis**

What are the goals for the project?

Through the planning project, the Partnership will work to:

- Reach consensus on major opportunities and choices that benefit the region, and successfully collaborate to maximize benefit and minimize risk;
- Position Partners to be leaders and shape their own futures individually and collectively, and;
- Support connectivity within the region, and between the region and beyond.

PREPARATION

ENGAGEMENT

PLANNING

**COMPONENT 1
Preparation**

Kick-off the project

Develop a strategy for promoting the plan and motivating participation

Create a plan for community engagement

**COMPONENT 3
Technical Analysis**

Research key challenges and opportunities facing the region

**COMPONENT 2
Community Engagement**

Think big about the future of the region and its communities

**COMPONENT 4
Plan Development**

Finalize the Framework action plan

**BIG PICTURE
SPRING 2020**

Get the conversation started and think about our goals for the future

**TESTING THE
DIRECTION
SUMMER 2020**

Affirm our goals and build actions for reaching our goals

**OPEN HOUSE
WINTER 2020**

Identify priorities and implementation strategies



How can you get involved?

- **Access the project website**
www.RegionalPlanningPartnership.org/projects/Framework2030
- **On the website you can ...**
 - *Find out more about the project;*
 - *Share your ideas through a community survey, and;*
 - *Contact the planning team with any questions or ideas.*



FRAMEWORK 2030
partnering for the future

To find out more, please visit:

www.RegionalPlanningPartnership.org/projects/Framework2030