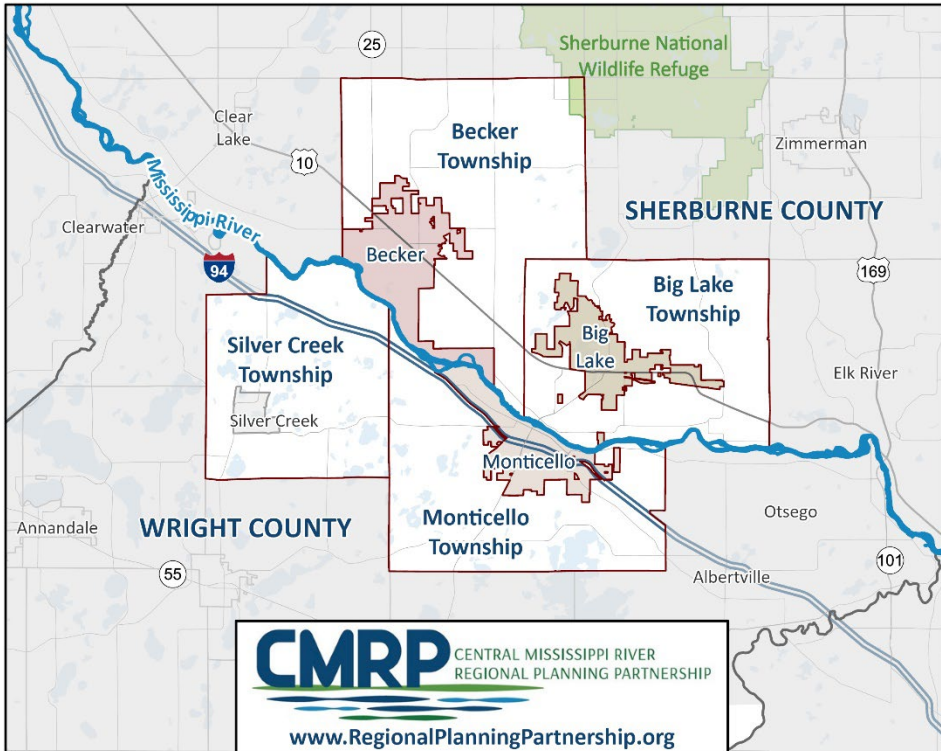


Framework 2030 Planning Area

The **planning area** focuses on Partner communities within the larger county boundaries.



CENTRAL MISSISSIPPI RIVER CMRP REGIONAL PLANNING PARTNERSHIP

Partners

- ▶ City of Becker
- ▶ City of Big Lake
- ▶ City of Monticello
- ▶ Becker Township
- ▶ Big Lake Township
- ▶ Monticello Township
- ▶ Silver Creek
- ▶ Sherburne County
- ▶ Wright County

Mission

Develop and implement a compelling regional vision and framework that guides local decisions on thoughtful and collaborative planning, growth, and development to benefit individual jurisdictions and the region as a whole.

Meetings

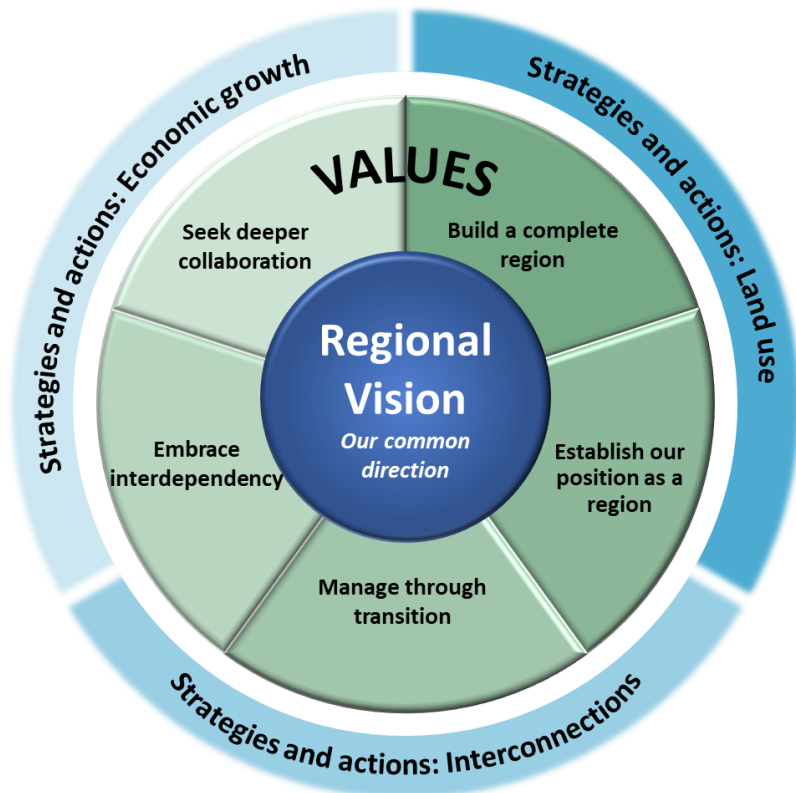
The Partnership meets monthly and hosts committees to collaborate on regional planning and economic development to advance its adopted regional vision. See www.RegionalPlanningPartnership.org for details.

FRAMEWORK 2030

partnering for the future

CMRP's flagship effort is **Framework 2030**, the region's first collaborative planning and economic development plan. Partner communities anticipate significant growth. Regional planning will help maintain a high quality of life for area residents, businesses, and visitors.

Based on community guidance, the Partnership adopted an aspirational regional vision, values, strategies, and robust actions.



Regional Vision

We – the communities of the Central Mississippi River Regional Planning Partnership – are a strong and dynamic region.

We are made prosperous through our network of assets and proactive leadership, made distinct through our vital and connected places, and made home by our welcoming people and communities.

The regional vision is advanced by key strategies and multiple action steps. You can track progress and contribute at the Partnership's website, www.RegionalPlanningPartnership.org.

Land Use Strategies

- Leverage the region's unique parks and natural resources
- Promote life-cycle housing
- Invest in placemaking
- Improve regional communication to support local land planning and management

Economic Growth Strategies

- Expand on the quality and diversity of employment opportunities
- Increase the pool of skilled labor in the region
- Network the response to economic disruptions
- Measure impacts of action locally and regionally

Interconnection Strategies

- Use clear regional identity to advance collaborative work
- Enhance regional connections
- Share talent, time, and information
- Continually address regional vulnerabilities