



Partnership Meeting

February 24, 2022 • 7:30-9:00 am

Sherburne County Government Center, County Board Room

[under COVID-19 guidelines, meetings are either in-person or virtual; see [Agenda](#) for dial-in information]

Routine Business

1 Welcome

Welcome and call to order

2 Introduction

Introductions/roll call
[in-person and online]

3 Agenda

Routine Business

- 1) Welcome and call to order
- 2) Introductions/roll call
- 3) Agenda: Review, revise, approve
- 4) Previous meeting notes: Review, approve
- 5) Treasurer's report: Review, receive

 **Action Requested:** *Review, revise, approve*

Action Items

- 6) Resolution supporting MnDOT fiber optic project
- 7) Budget amendment re: 2022 township fees
- 8) State of the Region: Date, time, location
- 9) Framework 2030 Strategy-Action Update

Discussion or Information Items

- 10) CMRP Community update: Wright County
- 11) CMRP/FW 2030: Committee/TF reports from Transportation, Placemaking
- 12) CMRP Required signed documents
- 13) Other business/future agenda items
- 14) Adjourn

4 Previous Notes

January 2022 meeting [Notes](#)



Action Requested: *Review, revise, approve*

5 Treasurer's Report

[Report](#)



Action Requested: *Accept*

Action Items

6

Resolution: Fiber Optic Project

Proposed support for MnDOT fiber optic project ([decision memo](#), [resolution](#))

1. Economic growth strategy: Expand quality and diversity of employment opportunities
 - a. Action E1-A: Facilitate expansion of high-speed internet access across the region
2. MnDOT seeking internal funding from Intelligent Transportation Systems for 3.5 miles of fiber along MN 25 from US 10 in Big Lake to 7th Street in Monticello
3. Benefits:
 - a. Increase system capacity to add more signals and be centrally managed
 - b. Reduce crashes and delays, improve safety and messaging capabilities
 - c. Increase options for “Dig-Once” broadband initiatives

 **Action Requested:** *Approve resolution of support*

7 Budget Amendment

Proposed change to support member townships ([decision memo](#))

1. Townships play an important role in the region's future; CMRP has actively recruited, supported them
2. Up to now, townships have seen less *direct* benefits as their planning/economic development is done by county or city staff; as CMRP's work expands and accelerates, value and benefits will increase
3. Townships and cities pay the same member fees, but townships have much smaller budgets
4. CMRP is in a very strong financial position
5. Proposal: Reduce financial burden on townships by amending 2022 budget to reduce township member fees by 50%
6. Budget impact covered by fund balance

 **Action Requested:** *Approve budget amendment to reduce 2022 township member fees by 50%*

8

State of the Region

State of the Region: TF has made good progress...

- Logistics: In person April 6, 3:30-5:00 pm (open at 3:00 for networking), Pebble Creek Golf Club in Becker
- Invitees: Partners, alternates, electeds, appointeds, admins, staff already connected to CMRP + others at admin discretion; school superintendents; state legislators, MnDOT/FHWA lead contacts
- Agenda (participants receive info packet):
 1. Welcome, introductions
 2. CMRP overview and history
 3. Framework 2030:
 - a. Whole group: Purpose and process; vision and key elements (land use, economic growth, interconnections); dashboard/regional indicators; feedback
 - b. Breakouts by key elements, everyone goes to each: present strategies and 2021-23 action items; facilitated discussion of how these are relevant to the region's future
 4. Feedback: What action items or data would most benefit your organization and why; in what new or different ways your organization would like to be involved in CMRP going forward; evaluation
 5. Close



9 Framework 2030 Updates

Monthly: Strategy-Action Update

- a. Action update for items scheduled in current and next quarter
- b. Discussion and feedback on progress and dashboard

 **Action Requested:** *Partnership direction on progress and feedback on dashboard*

FW 2030 Action Plan Dashboard: Land Use

Land Use Strategy L1. Leverage the region's unique parks and natural resources					
Action L1-A: Promote the expansion of bicycling and walking infrastructure throughout the region	2022 Jan- Jun	2022 Jul- Dec	2023 Jan- Jun	2023 Jul- Dec	Activities: Meetings being scheduled with Monticello and Sherburne County parks leads Issues: None
Action L1-C: Commission a regional trails and greenways map and plan	2022 Jan- Jun	2022 Jul- Dec	2023 Jan- Jun	2023 Jul- Dec	Activities: To be addressed with L1-A Issues: None
Land Use Strategy L2. Promote life-cycle housing					
Action L2-A: Present an annual dashboard and report on regional housing trends and development	2022 Jan- Jun	2022 Jul- Dec	2023 Jan- Jun	2023 Jul- Dec	Activities: This will be included in the overall CMRP dashboard, which will be presented at the annual State of the Region forum on April 6, 2022. Issues: None
Land Use Strategy L3. Invest in placemaking					
Action L3-A: Host a regional placemaking committee and microgrant program	2022 Jan- Jun	2022 Jul- Dec	2023 Jan- Jun	2023 Jul- Dec	Activities: Information and online application are live and several inquiries have been received. Ongoing promotion will be important. Issues: None
Land Use Strategy L4. Improve regional communication to support local land planning and management					
Action L4-A: Identify key regional corridors for coordinated planning	2022 Jan- Jun	2022 Jul- Dec	2023 Jan- Jun	2023 Jul- Dec	Activities: These are included in the Transportation Task Force Workplan Issues: None
Action L4-B: Develop a regional conceptual development strategy					

FW 2030 Action Plan Dashboard: Economic Growth

Economic Growth Strategy E1. Expand on the quality and diversity of employment opportunities					
Action E1-A: Facilitate expansion of high-speed internet access across the region	2022 Jan- Jun	2022 Jul- Dec	2023 Jan- Jun	2023 Jul- Dec	<p>Activities: CMRP passed a resolution to support MnDOT expansion of fiber optic between Big Lake and Monticello.</p> <p>Issues: None</p>
Action E1-B: Create and maintain regional inventories of industrial land and commercial property vacancies (combined with E3-B)	2022 Jan- Jun	2022 Jul- Dec	2023 Jan- Jun	2023 Jul- Dec	<p>Activities: Sherburne County has access to MNCAR, a well-known website used by real estate brokers and site selectors. Researching others.</p> <p>Issues: How to best make use of available resources.</p>
Economic Growth Strategy E2. Increase the pool of skilled labor in the region					
Action E2-A: Initiate discussions with higher-education institutions to better integrate economic development with workforce development	2022 Jan- Jun	2022 Jul- Dec	2023 Jan- Jun	2023 Jul- Dec	<p>Activities: (Jan 2022) Met with St Cloud Technical and Community College (customized training) and St Cloud State University Center for Continuing Studies to explore possibilities; both are interested in developing closer ties with the economic development officials and businesses in the region</p> <p>Issues: None</p>
Economic Growth Strategy E4. Measure impacts of action locally and regionally					
Action E4-A: Establish and update regional indicators dashboard; monitor progress	2022 Jan- Jun	2022 Jul- Dec	2023 Jan- Jun	2023 Jul- Dec	<p>Activities: Developing the dashboard to be presented at the annual State of the Region forum. Continue to work with Sherburne County staff, process consultant, and a graphic designer to ensure it is valuable and user-friendly.</p> <p>Issues: None</p>

FW 2030 Action Plan Dashboard: Interconnections

Interconnections Strategy I2. Enhance regional connections

Action I2-A: Continue conversations with MnDOT and the counties regarding special projects	2022 Jan- Jun	2022 Jul- Dec	2023 Jan- Jun	2023 Jul- Dec	Activities: Transportation Task Force staff team met in February to plan the best course forward with the Workplan items, which will incorporate several of the Land Use action items. Issues: None
---	---------------------	---------------------	---------------------	---------------------	--

Interconnections Strategy I3. Share talent, time, and information

Action I3-B: Pursue a regional lobbying effort, "Our fair share"	2022 Jan- Jun	2022 Jul- Dec	2023 Jan- Jun	2023 Jul- Dec	Activities: Federal infrastructure bill signed 11-15-2021, providing money for broadband, roads and bridges, transit and rail, power and water systems, and more. Along with the America Rescue Plan Act, there are some potential funds for regionally significant and supportive projects. Issues: None
---	---------------------	---------------------	---------------------	---------------------	--

Discussion, Information Items

Community Update: Wright County



WRIGHT COUNTY
MINNESOTA

Continued Growth

2020 Census 141,337 (▲13.3%)

2010 Census 124,700

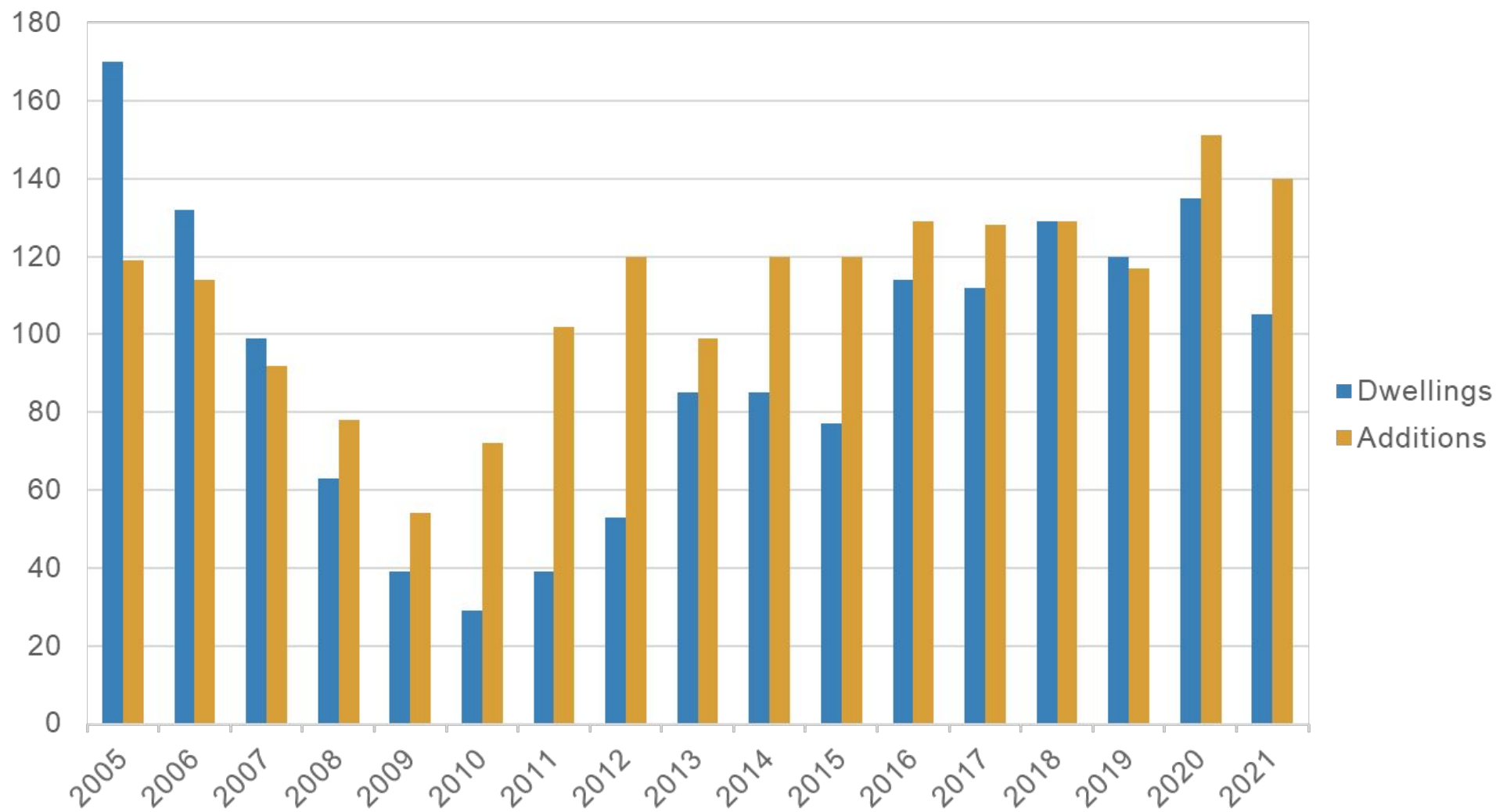
Largest increase

- Otsego 47.1%
- Waverly 40.0%
- Montrose 32.6%
- Hanover 23.7%
- Delano 18.7%

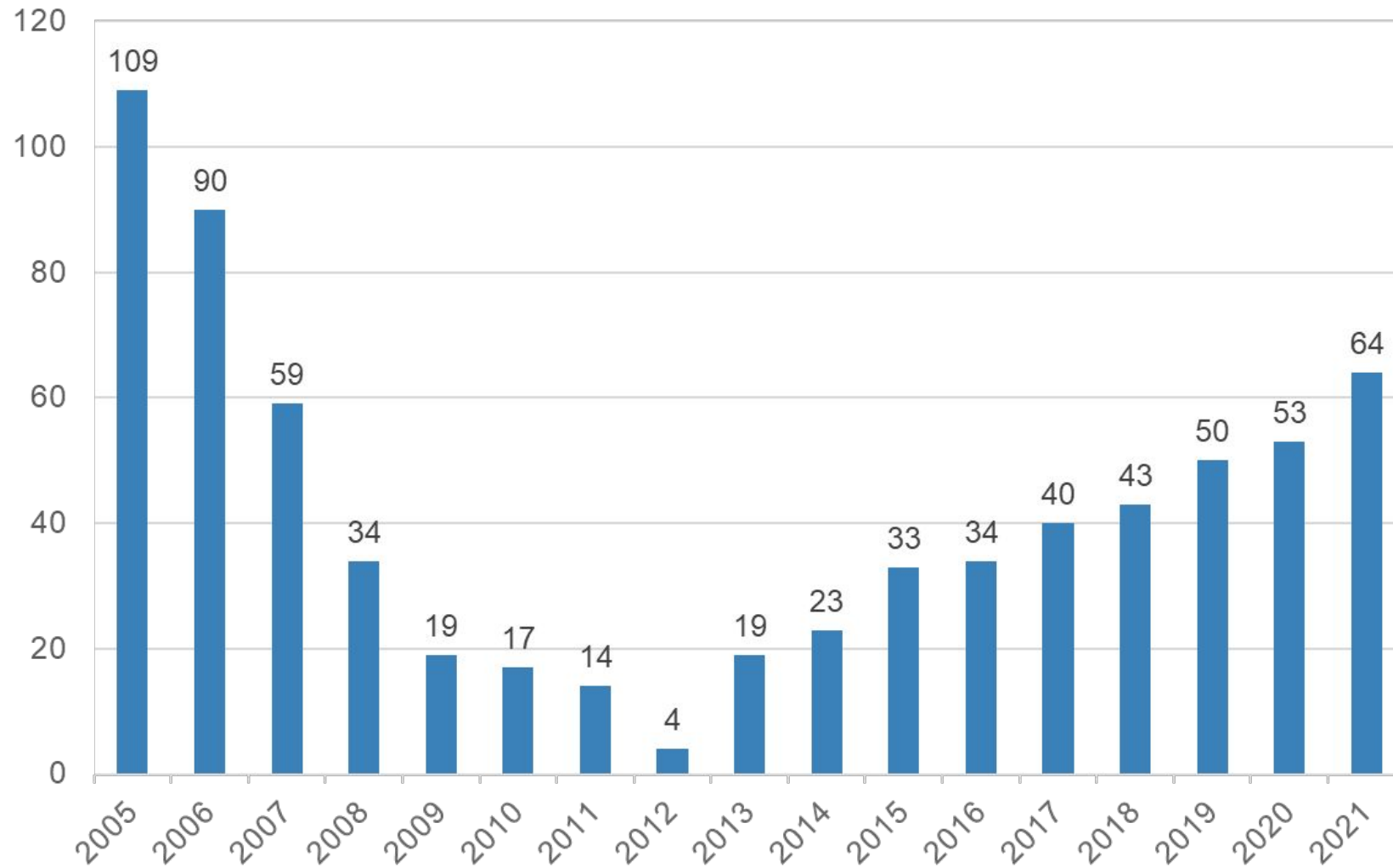
CMRP Members

- Monticello 13.3%
- Monticello Township 4.0%
- Silver Creek Township 9.6%

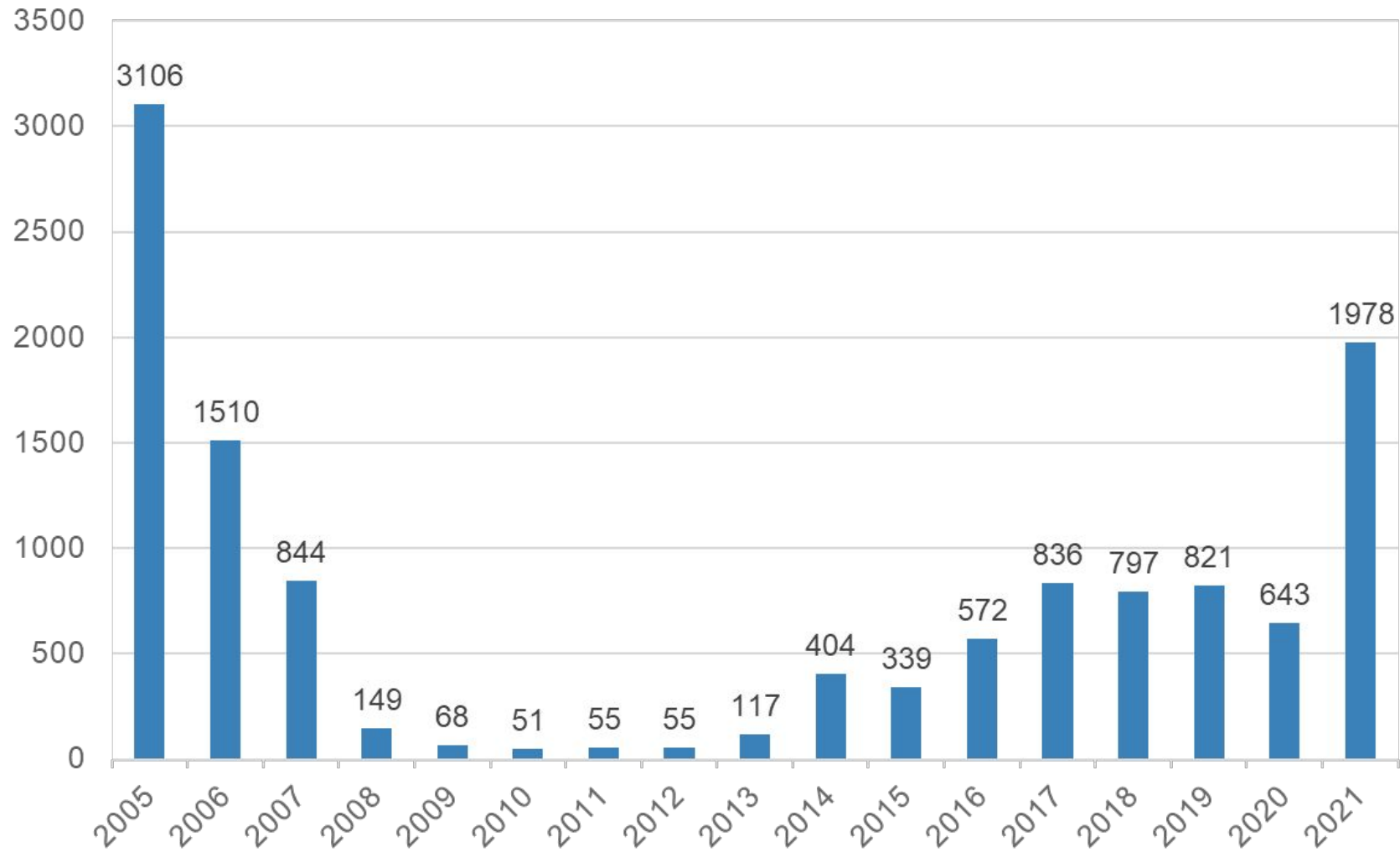
Wright County Dwelling Permits and Additions 2005-2021



Wright County Plats 2005-2021



Wright County Lots/New Parcels 2005-2021



ARPA Funds

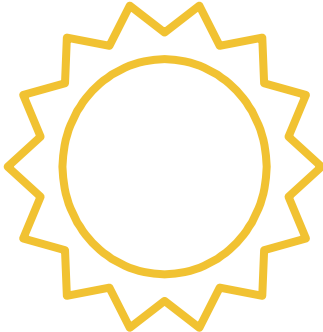
Broadband

- Broadband Feasibility and Assessment Study
- \$1.2M Allocated to Broadband Grant Program
- Matching Grant Program for “last mile”
- To fund projects that have significant financial support from cities, townships, and internet service providers (ISPs)
- Maximum award of \$400K
- Applications due 4/20/2022

ARPA Funds

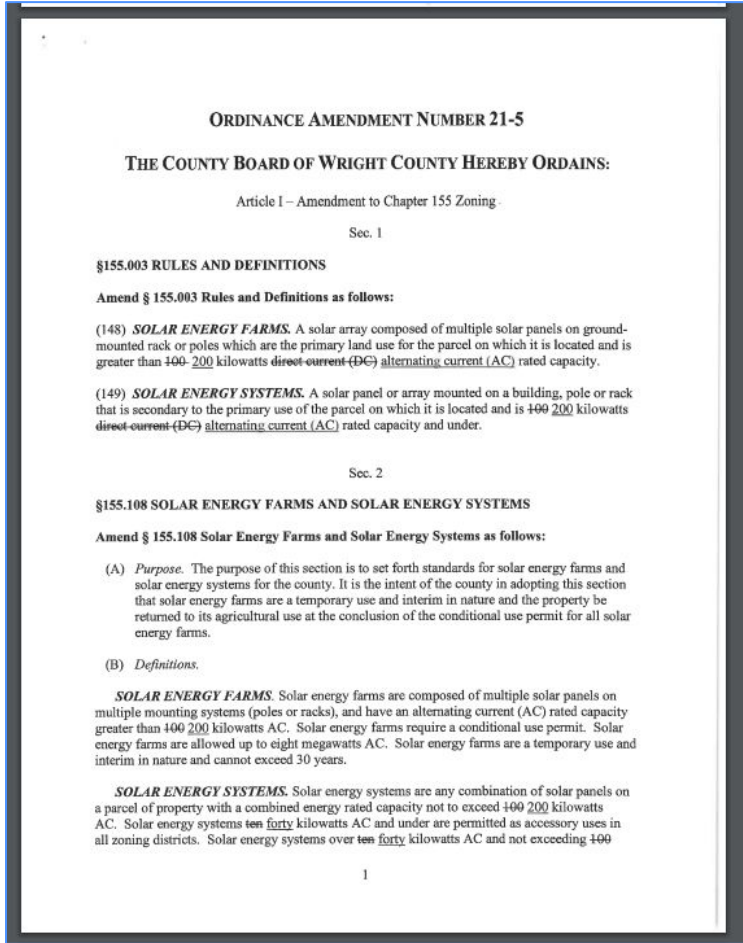
Water/ Sewer Infrastructure Grants

- \$4M set aside for matching grants for Wright County cities
- Allocation based on 2020 Census
- Allowable projects include those eligible under:
 - EPA Clean Water State Revolving Fund (CWSRF)
 - Drinking Water State Revolving Fund (DWSRF)
- Projects granted to date
 - Howard Lake: AMR water meter conversion project
 - Clearwater: Secondary water main



Solar Ordinance

- Solar Work Group formed January 2021
- Defined escrow requirement
- 1-mile setback requirement for 1.49MW and less
- Water management controls with SWCD approval requirement
- Decommissioning plan requirement



Current Projects

- Redevelopment of the Government Center Property
- Sale of Health and Human Services Center
- Move to new county campus



Current Projects

- Enterprise Resource Planning (ERP)

The Oracle logo consists of the word "ORACLE" in white, uppercase, sans-serif font, centered within a solid red rectangular background.

- Tyler Computer Assisted Mass Appraisal (CAMA)
- Tyler Property Tax



Questions? Thank you!



WRIGHT COUNTY
MINNESOTA

Committee/Task Force Reports

1. Transportation Task Force:

- a. First full meeting of the task force was on Feb. 16 see [Meeting Notes](#) for details
- b. Reviewed and discussed the Oct. 2020, MnDOT and FHWA [Presentation](#) to provide context to the task force. An important message from Partner members, is that the history of the Partnership is traced to transportation issues and how critical this task force is to accomplishing the goals of the Partnership.
- c. Focused on the steps necessary to respond to the charges given to the task force in the Oct 28, [Decision Memo](#)
- d. Deliverables:
 - i. Collecting past transportation studies in one place ([Transportation Study Library](#)) to extract critical transportation issues and solutions that have emerged.
 - ii. Staff will compile all zoning and long range maps into one document and analyze the conflicts and opportunities against the 2017-18 SRF, TH 25 Area Study.

2. Placemaking Committee: [Placemaking Microgrant information and online application](#)

- a. Everything is live and there was an initial round of promotion; no completed applications yet
- b. Launching further and ongoing promotions
- c. Application reviews will be quarterly or as needed

3. State of the Region (see earlier decision item)

12 Required Signed Documents

- +++ update

13 Other Business, Future Agenda Items

- Community update for March is Sherburne County; who will volunteer for April?
- +++

14 Adjourn



Thank You